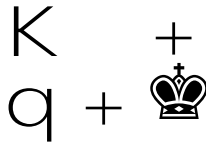


King Hunt: Queen+King



A PieceTakers Mini-game: Novice

Set-up

White to move

	"	"	"	"	"	"	"	"	#
8		+		+		+		+	⊘
7	+		+		+		+		⊘
6		+		+		+		+	⊘
5	+		+		L		+		⊘
4		+		+		+		+	⊘
3	+		+		+		+		⊘
2		+		+		+		+	⊘
1	+		+	Q	K		+		⊘
/	a	b	c	d	e	f	g	h	

Object

White: Checkmate the black king within the designated number of moves for your grade.

Black: Avoid checkmate within the designated number of moves for your opponents grade.

Grade	Max white moves
K	16
1	14
2	12
3	11
4	10
5	9
Master	8

Strategy for white:

Drive opponent's king to edge. Try to minimize your king moves. Watch out for stalemate!

Strategy for black:

Stay near the center. Think ahead! Look for stalemate positions.

- White wins? Try to win in fewer moves next time.
- Win in 9 moves? Try again against Chessmaster 7000

Record your games!

Game	Moves
1	
2	
3	
4	
5	
6	
7	
8	

Name: _____ Gr _____