

Chess Flash Cards! 1. e4 e5 2. Nf3 Nc6 openings (black)

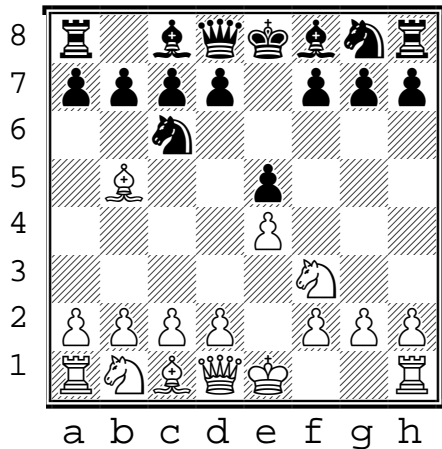
???

(1)

1. **e4 e5**
2. **Nf3 Nc6** openings

(black to move)

1. e4 e5
2. Nf3 Nc6
3. Bb5 ???



???

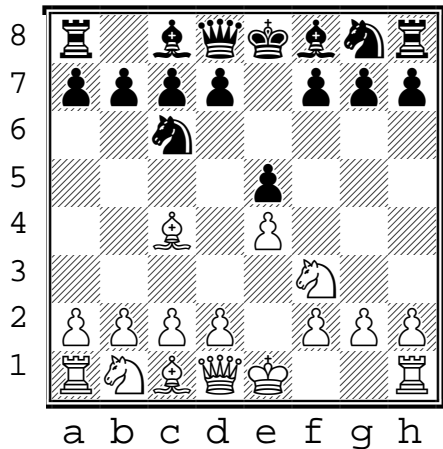
(2)

1. **e4 e5**
2. **Nf3 Nc6** openings

(black to move)

Top 2 GM moves

1. e4 e5
2. Nf3 Nc6
3. Bc4 ???



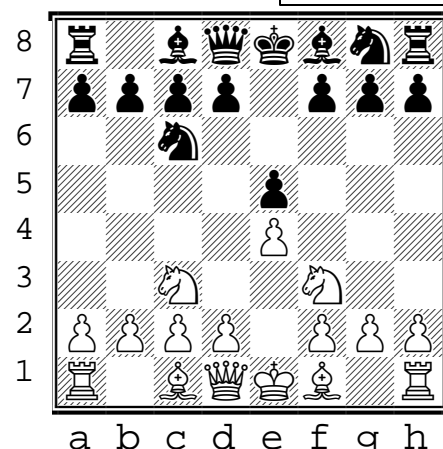
???

(3)

1. **e4 e5**
2. **Nf3 Nc6** openings

(black to move)

1. e4 e5
2. Nf3 Nc6
3. Nc3 ???



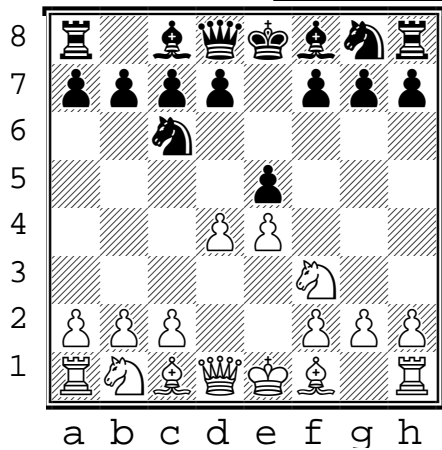
???

(4)

1. **e4 e5**
2. **Nf3 Nc6** openings

(black to move)

1. e4 e5
2. Nf3 Nc6
3. d4 ???



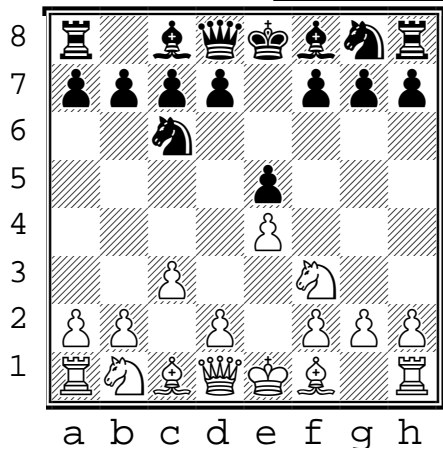
???

(5)

1. **e4 e5**
2. **Nf3 Nc6** openings

(black to move)

1. e4 e5
2. Nf3 Nc6
3. c3 ???



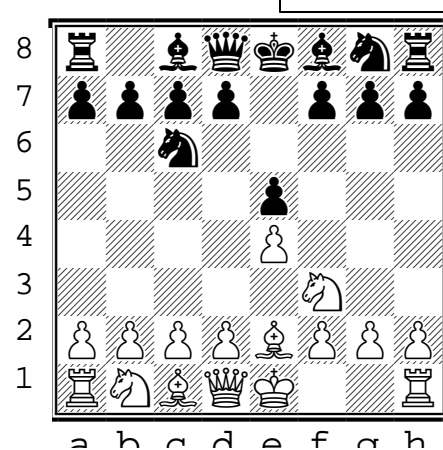
???

(6)

1. **e4 e5**
2. **Nf3 Nc6** openings

(black to move)

1. e4 e5
2. Nf3 Nc6
3. Be2 ???



1. Print on front+back of card stock
2. Cut where gray bars overlap.

Chess Flash Cards!

1. e4 e5 2. Nf3 Nc6 openings (black)

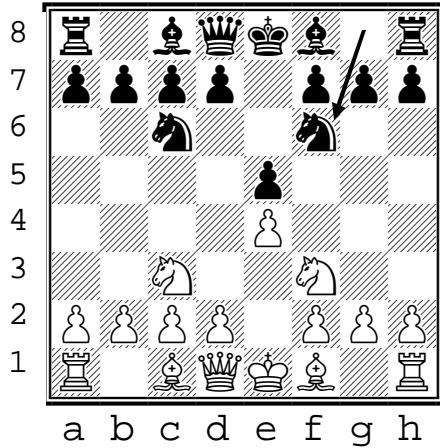


C46 (3)

1. **e4 e5**
2. **Nf3 Nc6** openings

(black to move)

1. e4 e5
2. Nf3 Nc6
3. Nc3 ...
(3 knights defense)
Nf6
(4 knights defense)



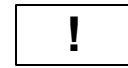
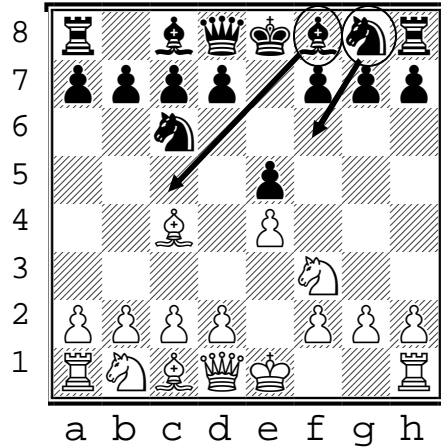
(2)

1. **e4 e5**
2. **Nf3 Nc6** openings

(black to move)

Top 2 GM moves

1. e4 e5
2. Nf3 Nc6
3. Bc4 **Bc5**
(Italian game)
or **Nf6**
(2 knights defense)

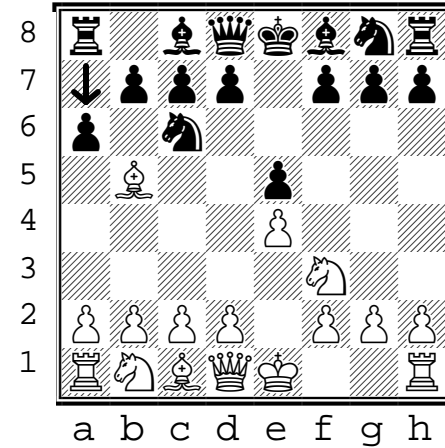


C60 (1)

1. **e4 e5**
2. **Nf3 Nc6** openings

(black to move)

1. e4 e5
2. Nf3 Nc6
3. Bb5 ...
(Spanish game)
a6
(Morphy defense)

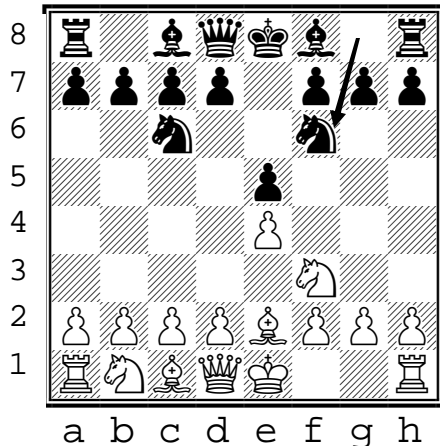


C44 (6)

1. **e4 e5**
2. **Nf3 Nc6** openings

(black to move)

1. e4 e5
2. Nf3 Nc6
3. Be2 ...
(Tayler opening)
Nf6

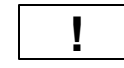
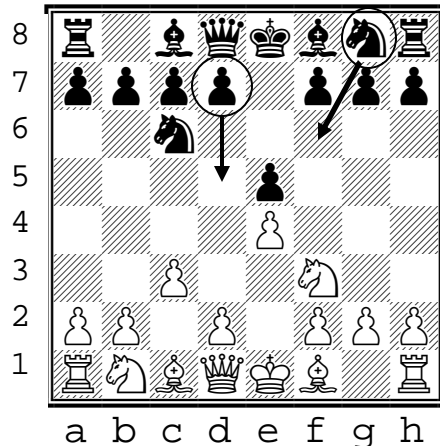


C44 (5)

1. **e4 e5**
2. **Nf3 Nc6** openings

(black to move)

1. e4 e5
2. Nf3 Nc6
3. c3 ...
(Ponziani opening)
or **d5**
Nf6



C44 (4)

1. **e4 e5**
2. **Nf3 Nc6** openings

(black to move)

1. e4 e5
2. Nf3 Nc6
3. d4 ...
(Scotch game)
exd4

