

Chess Flash Cards!

1. e4 e5 2. Nf3 ... (white)

???

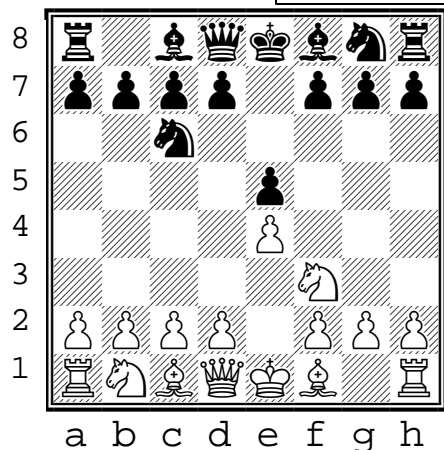
C44 (1)

- 1. e4 e5**
2. Nf3 openings

1. e4 e5
2. Nf3 Nc6
3. ...

(white to move)

Top 2 GM moves



???

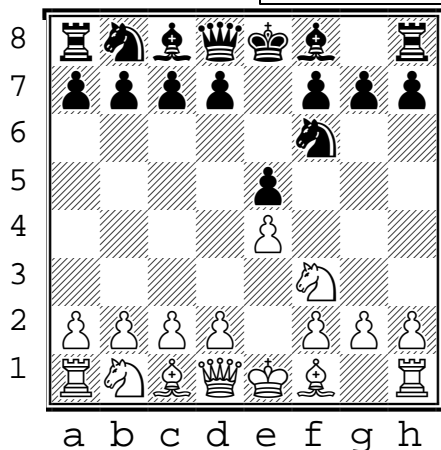
C42 (2)

- 1. e4 e5**
2. Nf3 openings

1. e4 e5
2. Nf3 Nf6
3. ...

(white to move)

Top 3 GM moves



???

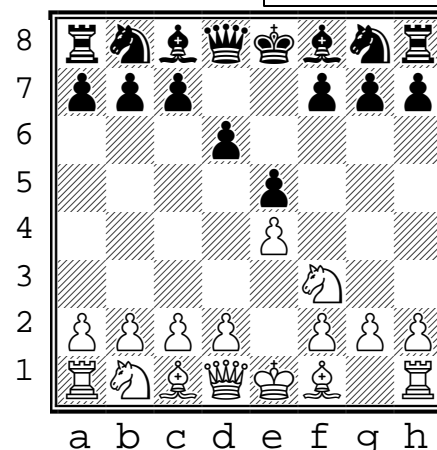
C41 (3)

- 1. e4 e5**
2. Nf3 openings

1. e4 e5
2. Nf3 d6
3. ...

(white to move)

Top GM move



???

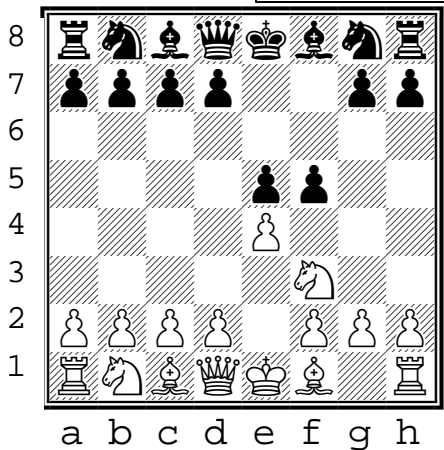
C40 (4)

- 1. e4 e5**
2. Nf3 openings

1. e4 e5
2. Nf3 f5
3. ...

(white to move)

Top 2 GM moves



???

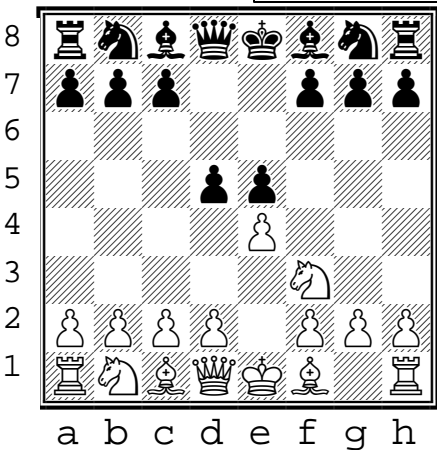
C40 (5)

- 1. e4 e5**
2. Nf3 openings

1. e4 e5
2. Nf3 d5
3. ...

(white to move)

Top GM move



???

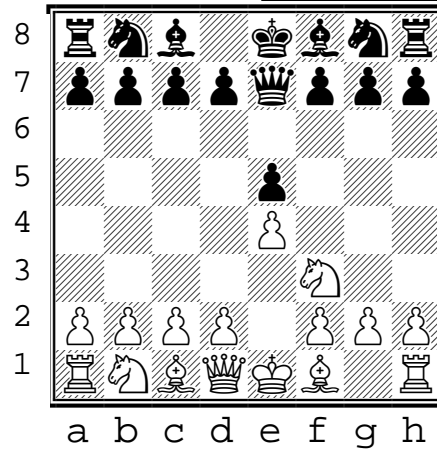
C40 (6)

- 1. e4 e5**
2. Nf3 openings

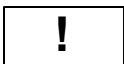
1. e4 e5
2. Nf3 Qe7
3. ...

(white to move)

Top GM move



1. Print on front+back of card stock
2. Cut where gray bars overlap.



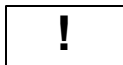
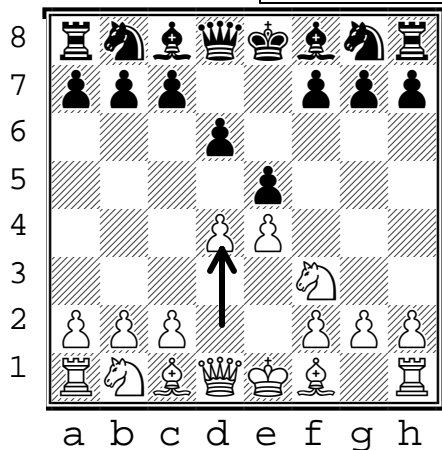
C41 (3)

- 1. e4 e5**
2. Nf3 openings

(white to move)

Top GM move

1. e4 e5
2. Nf3 d6
Philidor's defense
3. **d4**



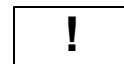
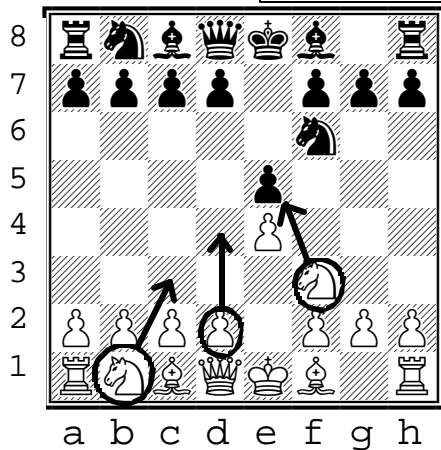
C42 (2)

- 1. e4 e5**
2. Nf3 openings

(white to move)

Top 3 GM moves

2. Nf3 Nf6
Pretrov's Defense
3. **Nxe5**
3. **Nc3**
3 Knights game
3. **d4**
.../Steinitz var.



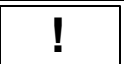
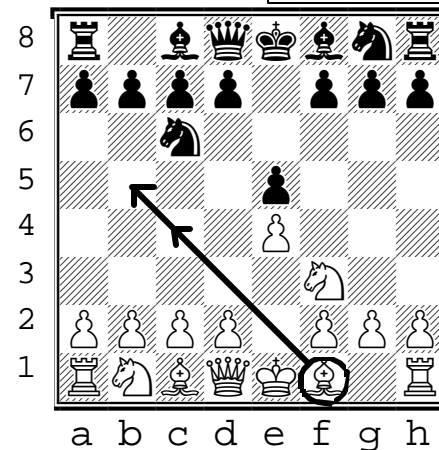
C44 (1)

- 1. e4 e5**
2. Nf3 openings

(white to move)

Top 2 GM moves

1. e4 e5
2. Nf3 Nc6
Queen's Knight var.
3. **Bb5**
Ruy Lopez
3. **Bc4**
Italian Game



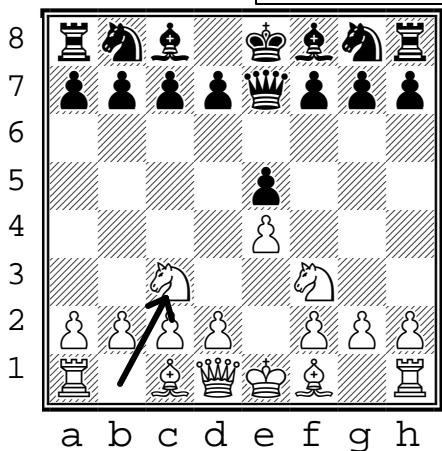
C40 (6)

- 1. e4 e5**
2. Nf3 openings

(white to move)

Top GM move

1. e4 e5
2. Nf3 Qe7
Gunderan defence
3. **Nc3**



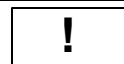
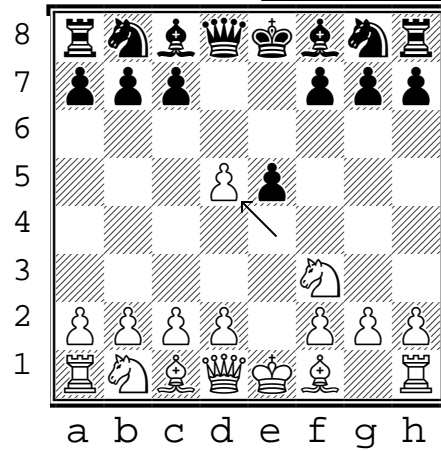
C40 (5)

- 1. e4 e5**
2. Nf3 openings

(white to move)

Top GM move

1. e4 e5
2. Nf3 d5
Queen's Pawn counter gambit
3. **exd5**



C40 (4)

- 1. e4 e5**
2. Nf3 openings

(white to move)

Top 2 GM moves

1. e4 e5
2. Nf3 f5
Latvian gambit
3. **Nxe5**
3. **exf5**

