

# Chess Flash Cards!

## 1. e4 e5 openings - black

???

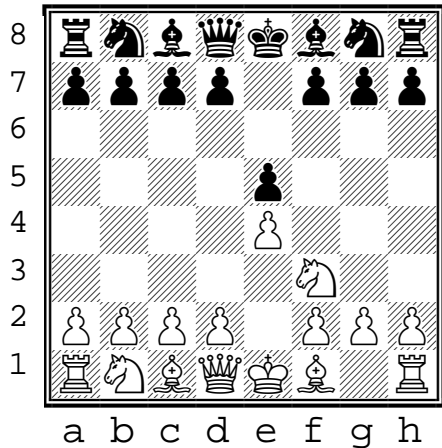
(1)

1. **e4 e5 openings**

(black to move)

*Top 2 GM moves*

- 1. e4 e5
- 2. Nf3



???

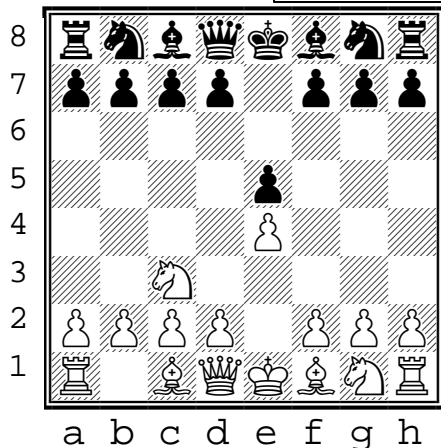
(2)

1. **e4 e5 openings**

(black to move)

*Top 2 GM moves*

- 1. e4 e5
- 2. Nc3



???

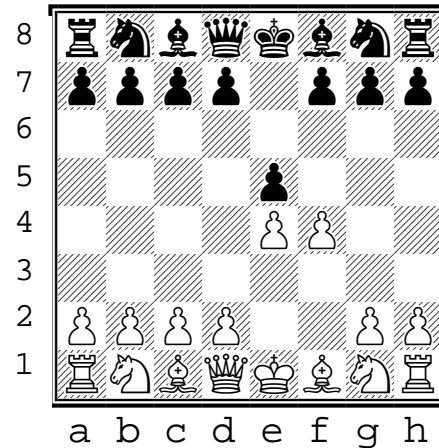
(3)

1. **e4 e5 openings**

(black to move)

*Top 2 GM moves*

- 1. e4 e5
- 2. f4



???

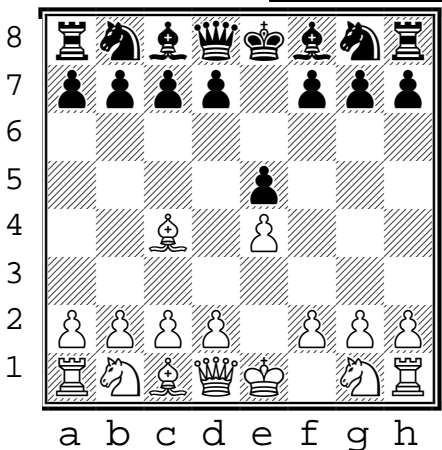
(4)

1. **e4 e5 openings**

(black to move)

*Top GM move*

- 1. e4 e5
- 2. Bc4



???

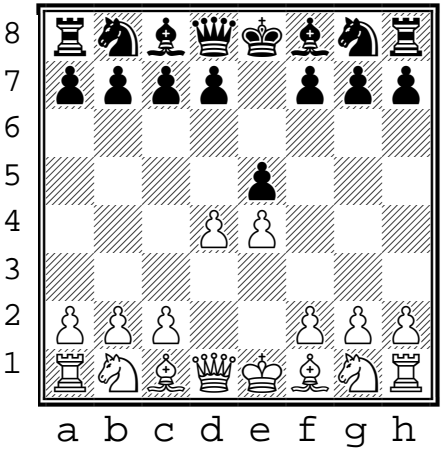
(5)

1. **e4 e5 openings**

(black to move)

*Top GM move*

- 1. e4 e5
- 2. d4



???

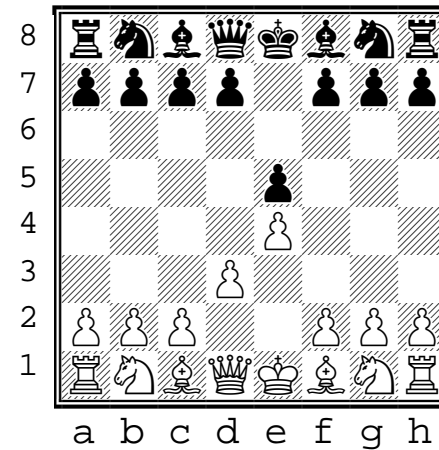
(6)

1. **e4 e5 openings**

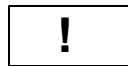
(black to move)

*Top 2 GM moves*

- 1. e4 e5
- 2. d3



- 1. Print "???" on front+back of card stock
- 2. Cut where gray bars overlap.



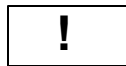
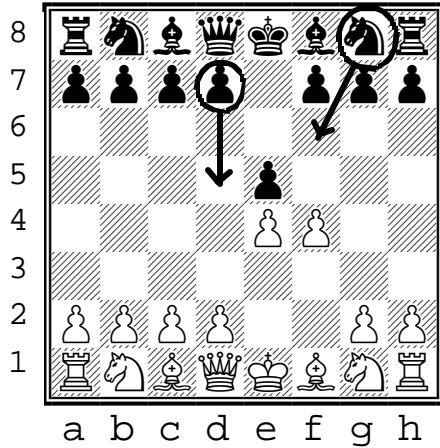
C30 (3)

1. **e4 e5 openings**

(black to move)

Top 2 GM moves

- 1. e4 e5
- 2. f4  
*King's Gambit.*
- 2. ... **Nf6**  
*.../ Accepted.*
- 2. ... **d5**  
*/ counter gambit*



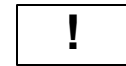
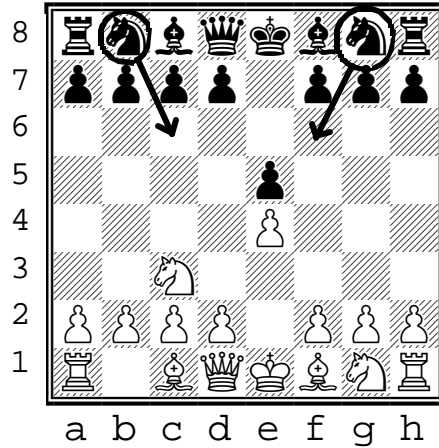
C27 (2)

1. **e4 e5 openings**

(black to move)

Top 2 GM moves

- 1. e4 e5
- 2. Nc3  
*Vienna Game.*
- 2. ... **Nf6**  
*.../Falkbeer var.*
- 2. ... **Nc6**



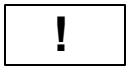
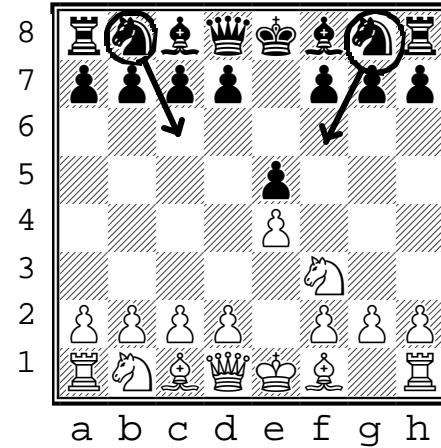
C40 (1)

1. **e4 e5 openings**

(black to move)

Top 2 GM moves

- 1. e4 e5
- 2. Nf3  
*King's Knight opng.*
- 2. ... **Nc6**  
*Queen's Knight var*
- 2. ... **Nf6**  
*Petrov's Defense*



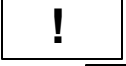
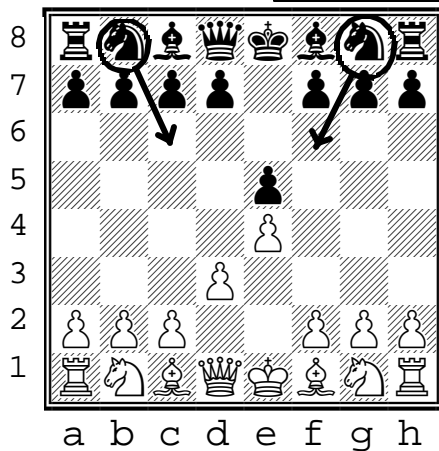
C20(6)

1. **e4 e5 openings**

(black to move)

Top 2 GM moves

- 1. e4 e5
- 2. d3  
*Leonardi's var..*
- 2. ... **Nf6**
- 2. ... **Nc6**



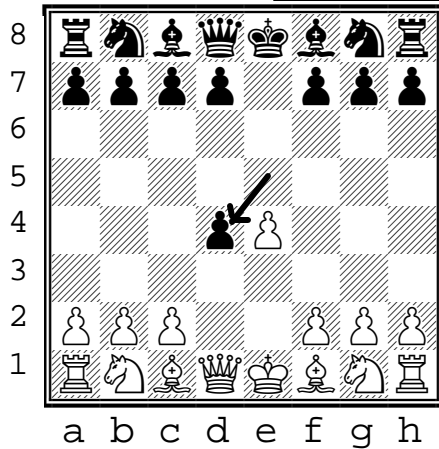
C20 (5)

1. **e4 e5 openings**

(black to move)

Top GM move

- 1. e4 e5
- 2. d4  
*Center game*
- 2. ... **exd4**  
*.../ Accepted*



C34 (4)

1. **e4 e5 openings**

(black to move)

Top GM move

- 1. e4 e5
- 2. Bc4  
*Bishop's Opening.*
- 2. ... **Nf6**  
*Berlin defense*

