

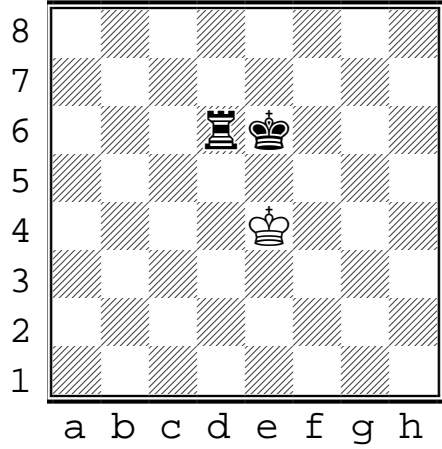
Chess Flash Cards!

Rook+King vs King Checkmate

???

Rook+King vs King

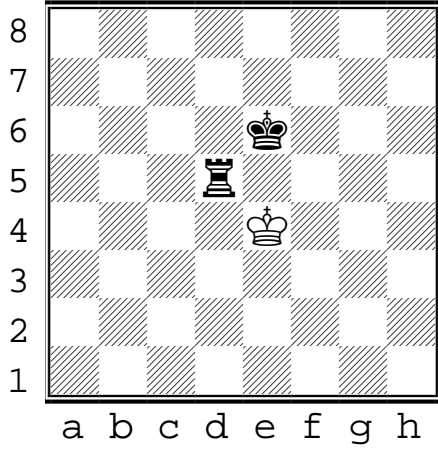
Black to move



???

Rook+King vs King

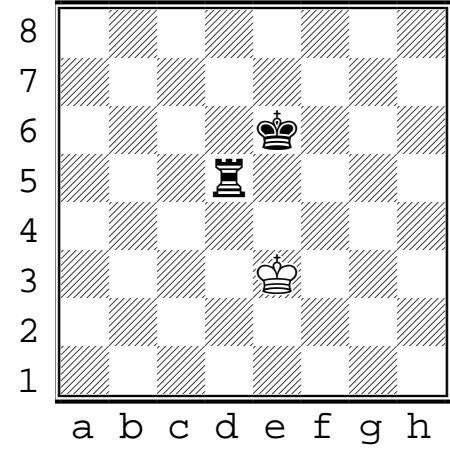
Black to move



???

Rook+King vs King

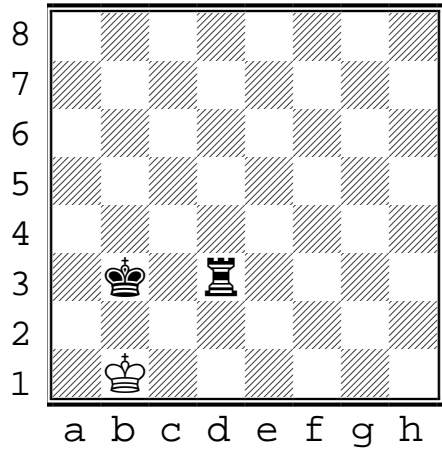
Black to move



???

Rook+King vs King

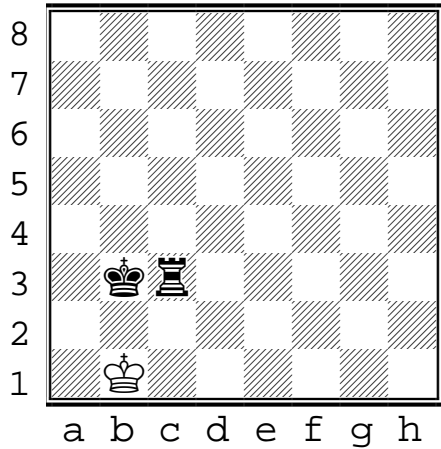
Black to move



???

Rook+King vs King

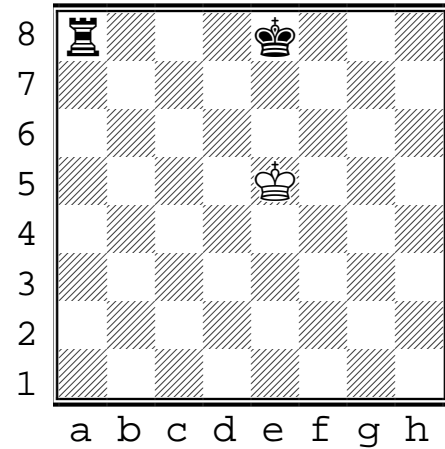
Black to move



???

Rook+King vs King

Black to move



1. Print even/odd on front+back of card stock
2. Cut where gray bars overlap.

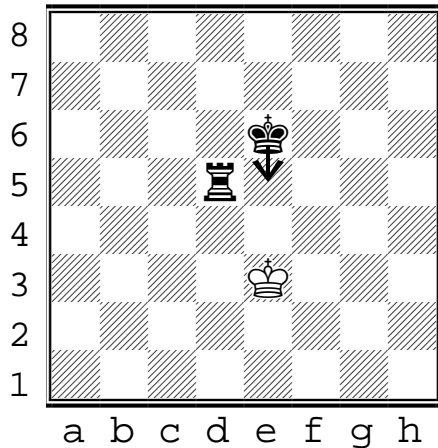
Chess Flash Cards!



Rook+King vs King

Black to move

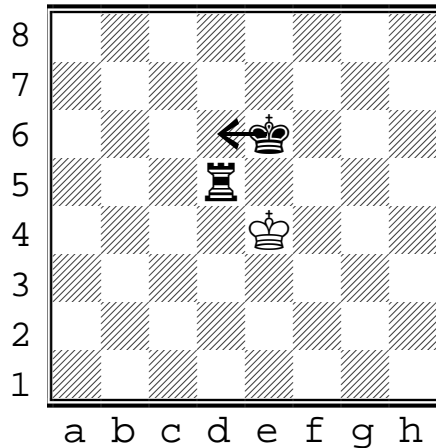
Use your king to 'bully' the opposing king toward the edge



Rook+King vs King

Black to move

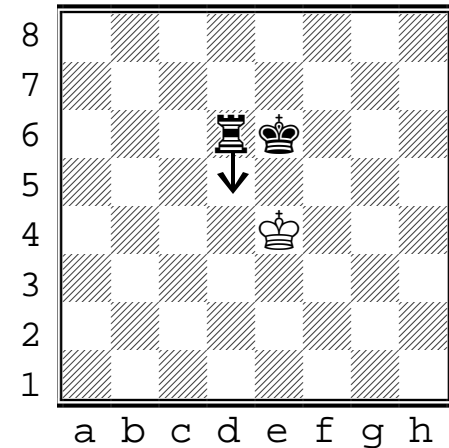
Waste a move with king. White will be forced to move away next move.



Rook+King vs King

Black to move

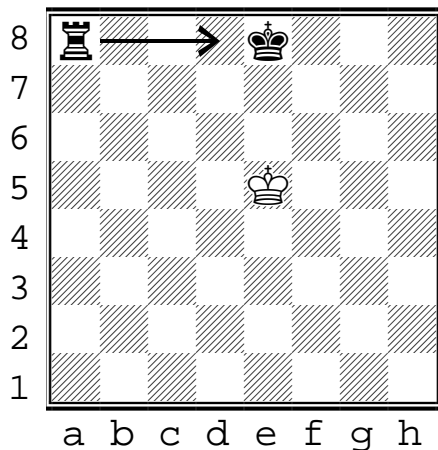
'Shrink the box' with the Rook



Rook+King vs King

Black to move

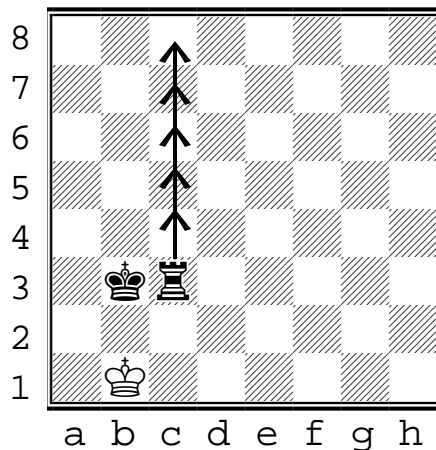
'Shrink the box' and get immediate protection of the king



Rook+King vs King

Black to move

Mate in two! Move rook away for a moment keeping the king trapped.



Rook+King vs King

Black to move

Mate in one!

