

Chess Flash Cards!

Queen's Gambit - Declined (black)

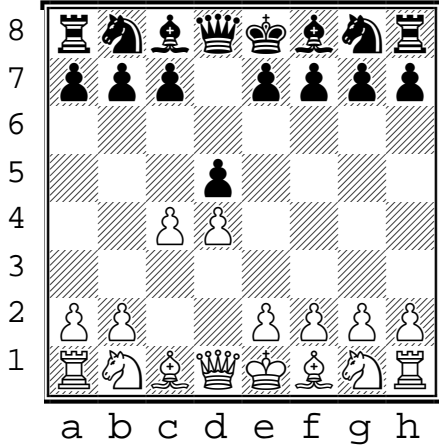
???

(1)

Queen's Gambit declined

(black to move)
Top 2 GM moves

1. d4 d5
2. c4 ...



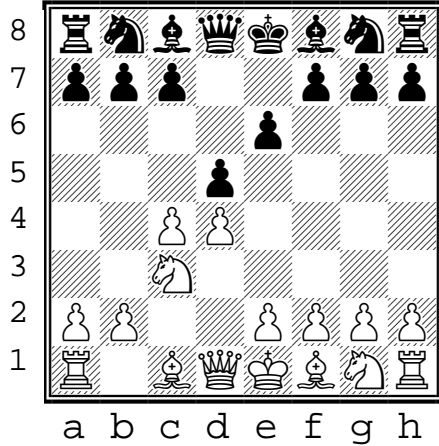
???

(2)

Queen's Gambit declined

(black to move)

1. d4 d5
2. c4 e6
3. Nc3 ...



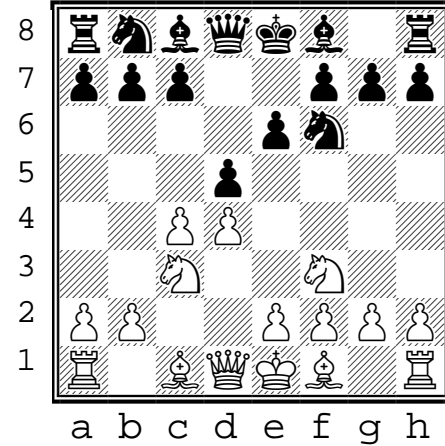
???

(3)

Queen's Gambit declined

(black to move)
Top 2 GM moves

1. d4 d5
2. c4 e6
3. Nc3 Nf6
4. Nf3 ...



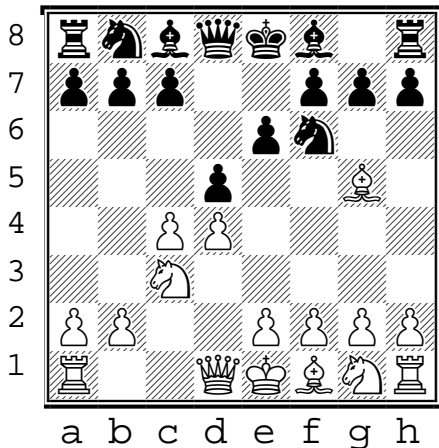
???

(4)

Queen's Gambit declined

(black to move)
Top 3 GM moves

1. d4 d5
2. c4 e6
3. Nc3 Nf6
4. Bg5 ...



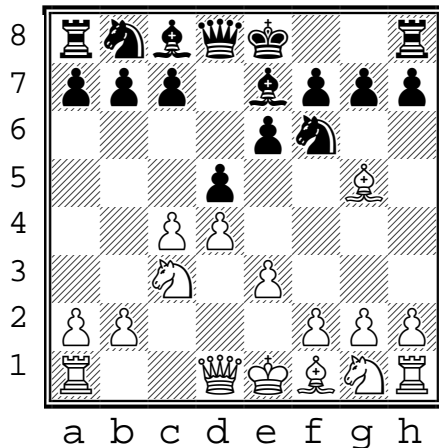
???

(5)

Queen's Gambit declined

(black to move)
Top 2 GM moves

1. d4 d5
2. c4 e6
3. Nc3 Nf6
4. Bg5 Be7
5. e3 ...



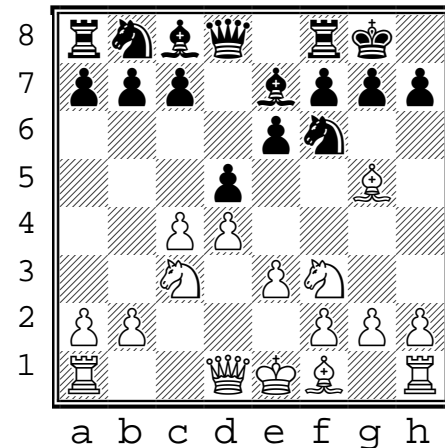
???

(6)

Queen's Gambit declined

(black to move)
Top 2 GM moves

1. d4 d5
2. c4 e6
3. Nc3 Nf6
4. Bg5 Be7
5. e3 O-O
6. Nf3 ...



1. Print even/odd on front+back of card stock
2. Cut where gray bars overlap.

Chess Flash Cards!

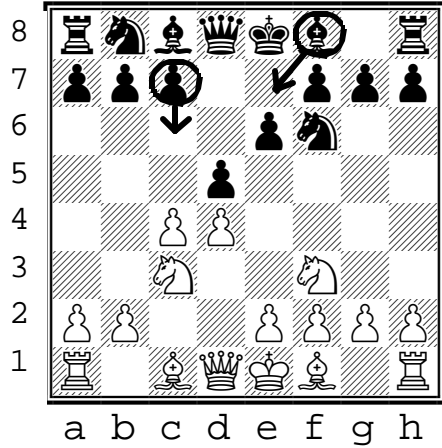
Queen's Gambit - Declined (black)

!

(3)

Queen's Gambit declined
(black to move)
Top 2 GM moves

4. **c6**
or
4. **Be7**

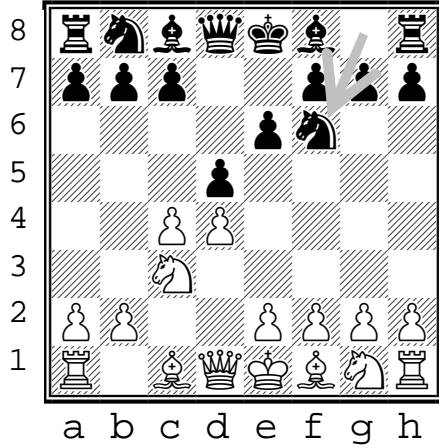


!

(2)

Queen's Gambit declined
(black to move)

1. d4 d5
2. c4 e6
3. Nc3 **Nf6**

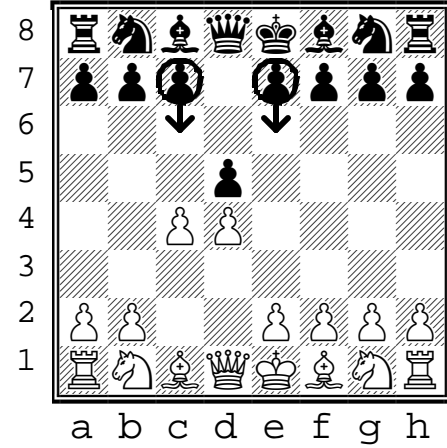


!

(1)

Queen's Gambit declined
(black to move)
Top 2 GM moves

2. **e6**
(main)
2. **c6**
(slav)

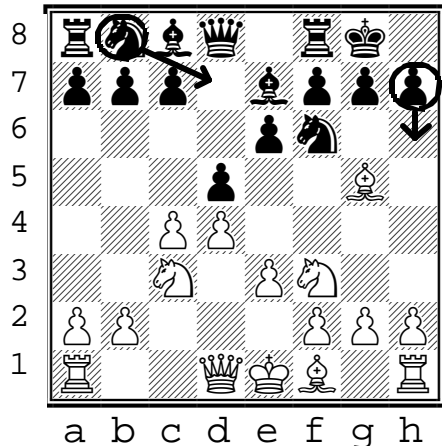


!

(6)

Queen's Gambit declined
(black to move)
Top 2 GM moves

6. **Nbd7**
or
6. **h6**

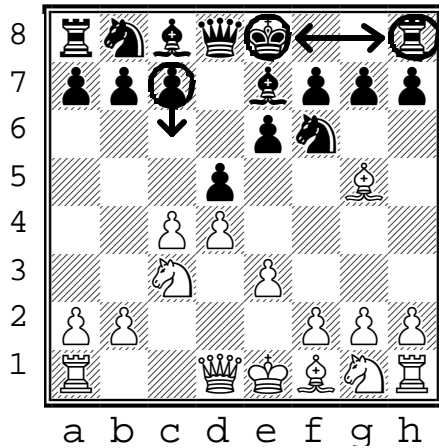


!

(5)

Queen's Gambit declined
(black to move)
Top 2 GM moves

5. **O-O**
or
5. **c6**

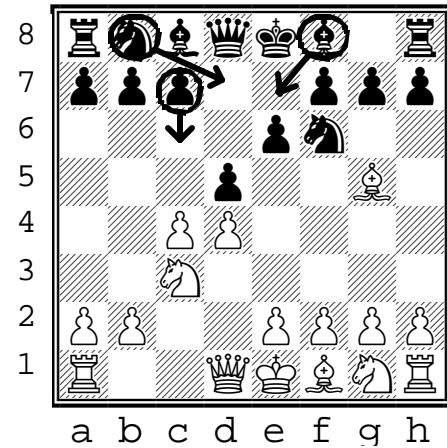


!

(4)

Queen's Gambit declined
(black to move)
Top 3 GM moves

4. ... **Be7**
or
4. ... **Nbd7**
or
4. ... **c6**



Queens gambit declined (black)