

Chess Flash Cards!

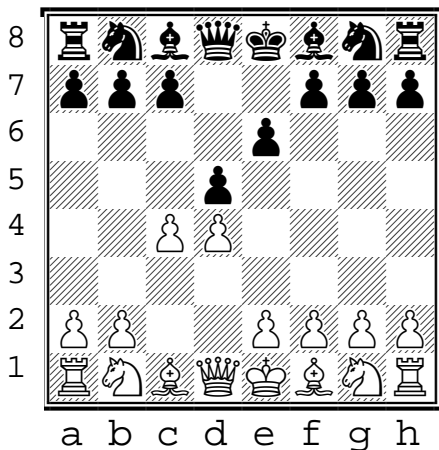
Queen's Gambit - Declined (white)

???

(1)

Queen's Gambit declined
(white to move)

1. d4 d5
2. c4 e6
3. ...

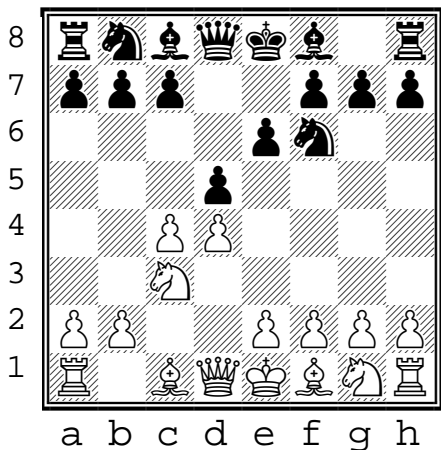


???

(2)

Queen's Gambit declined
(white to move)
Top 2 GM moves

1. d4 d5
2. c4 e6
3. Nc3 Nf6
4.

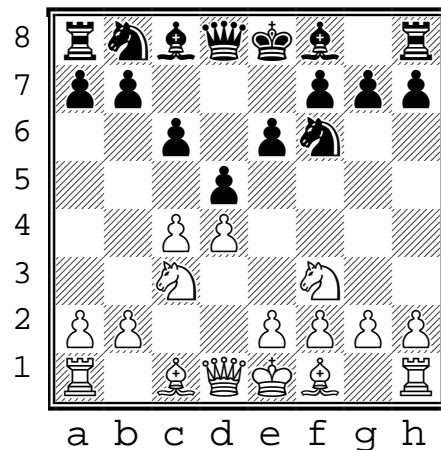


???

(3)

Queen's Gambit declined
(white to move)

1. d4 d5
2. c4 e6
3. Nc3 Nf6
4. Nf3 c6
5. ...

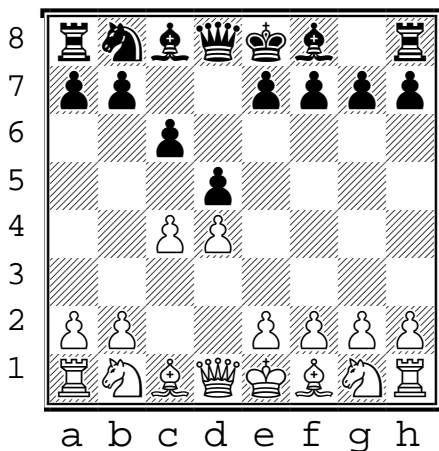


???

(4)

Queen's Gambit declined
(white to move)

1. d4 d5
2. c4 c6
3. ...

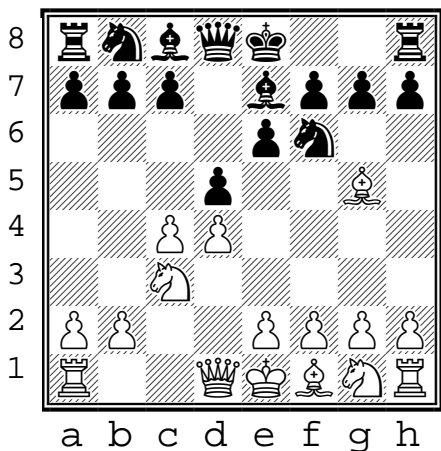


???

(5)

Queen's Gambit declined
(white to move)
Top 2 GM moves

1. d4 d5
2. c4 e6
3. Nc3 Nf6
4. Bg5 Be7
5. ...

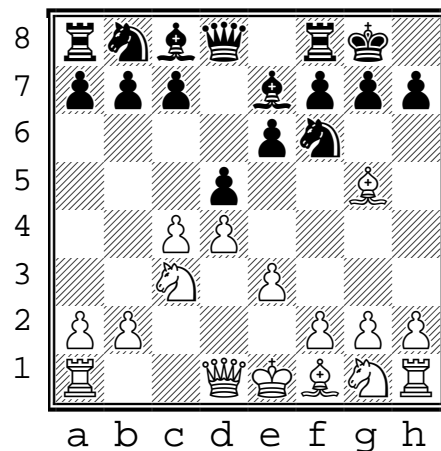


???

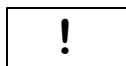
(6)

Queen's Gambit declined
(white to move)

1. d4 d5
2. c4 e6
3. Nc3 Nf6
4. Bg5 Be7
5. e3 O-O
6. ...



1. Print even/odd on front+back of card stock
2. Cut where gray bars overlap.

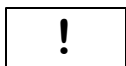
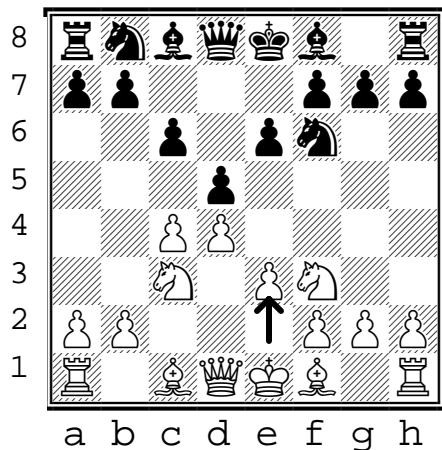


D45 (3)

Queen's Gambit declined

(white to move)

1. d4 d5
2. c4 e6
3. Nc3 Nf6
4. Nf3 c6
5. **e3**



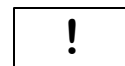
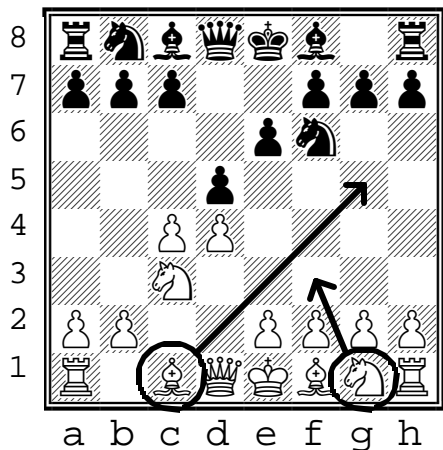
D37/D50 (2)

Queen's Gambit declined

(white to move)

Top 2 GM moves

4. **Nf3**
- or
4. **Bg5**

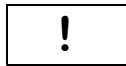
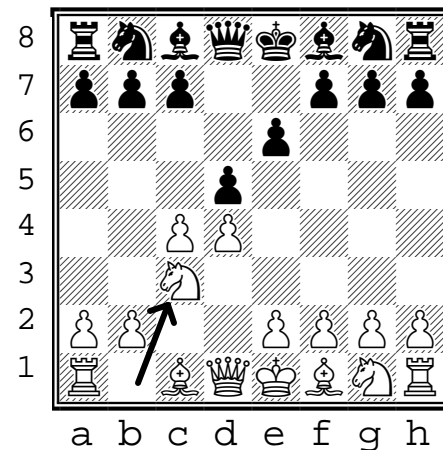


D31 (1)

Queen's Gambit declined

(white to move)

1. d4 d5
2. c4 e6
3. **Nc3**

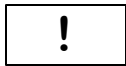
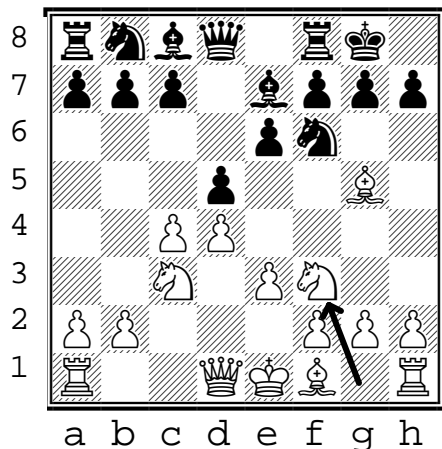


D53 (6)

Queen's Gambit declined

(white to move)

1. d4 d5
2. c4 e6
3. Nc3 Nf6
4. Bg5 Be7
5. e3 O-O
6. **Nf3**



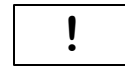
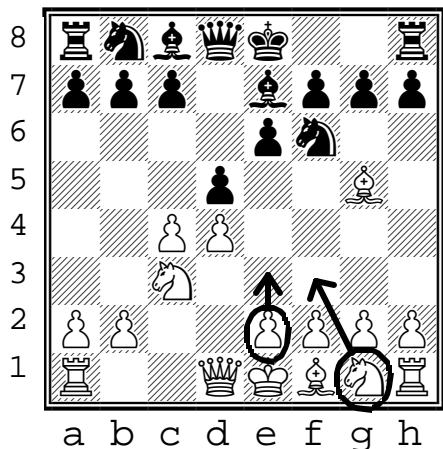
D53 (5)

Queen's Gambit declined

(white to move)

Top 2 GM moves

5. **e3**
- or
5. **Nf3**



D11 (4)

Queen's Gambit declined

(white to move)

1. d4 d5
2. c4 c6
3. **Nf3**

