

Chess Flash Cards!

Queens Gambit \ Slav —Main Line (black)

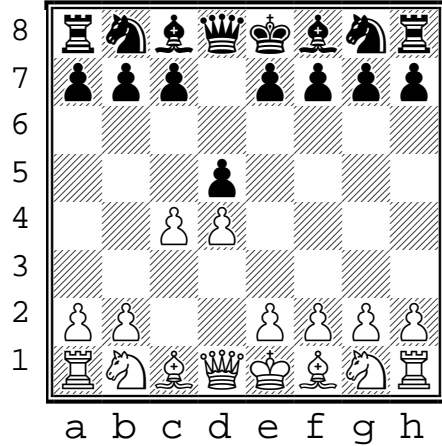
???

(1)

Queen's Gambit
Slav — Main line

1. d4 d5
2. c4 ...

(black to move)



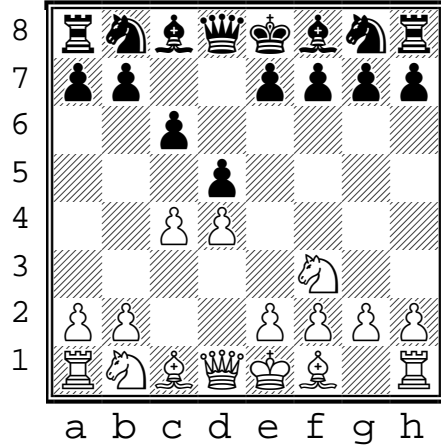
???

(2)

Queen's Gambit
Slav — Main line

1. d4 d5
2. c4 c6
3. Nf3 ...

(black to move)



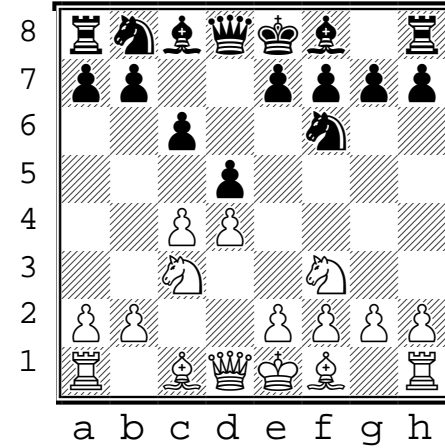
???

(3)

Queen's Gambit
Slav — Main line

1. d4 d5
2. c4 c6
3. Nf3 Nf6
4. Nc3 ...

(black to move)



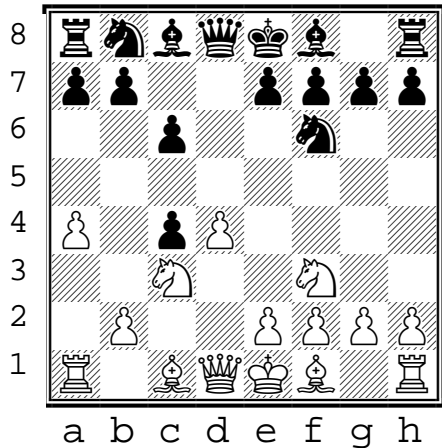
???

(4)

Queen's Gambit
Slav — Main line

1. d4 d5
2. c4 c6
3. Nf3 Nf6
4. Nc3 dxc4
5. a4 ...

(black to move)



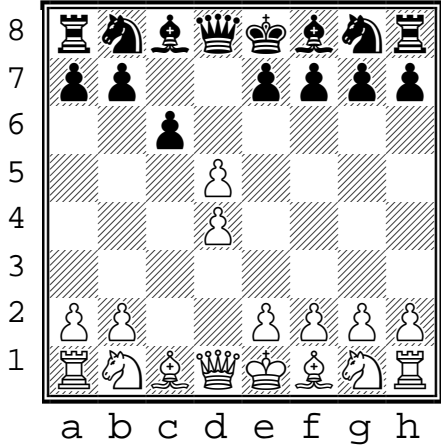
???

(5)

Queen's Gambit
Slav — Main line
Exchange variation

1. d4 d5
2. c4 c6
3. cxd5 ...

(black to move)



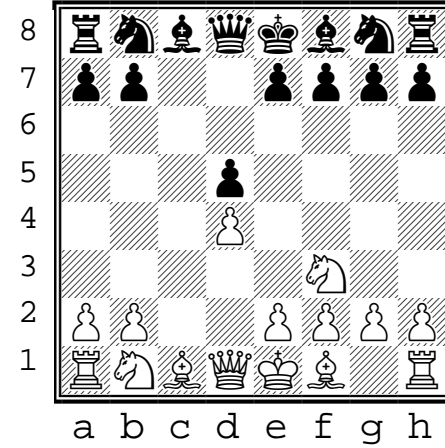
???

(6)

Queen's Gambit
Slav — Main line
Exchange variation

1. d4 d5
2. c4 c6
3. cxd5 cxd5
4. Nf3 ...

(black to move)



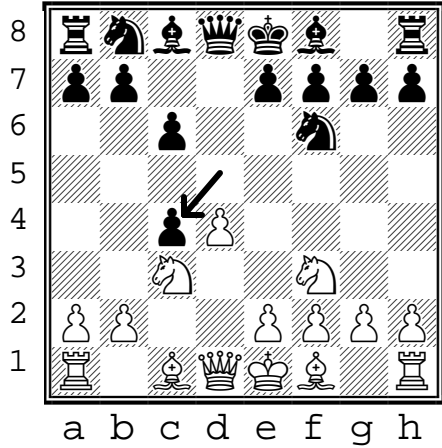


D15 (3)

Queen's Gambit
Slav — Main line

(black to move)

1. d4 d5
2. c4 c6
3. Nf3 Nf6
4. Nc3 **dxc4**

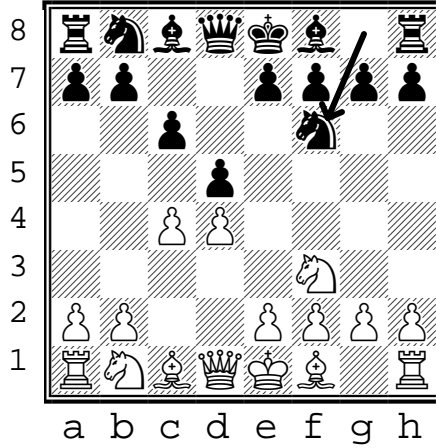


D11 (2)

Queen's Gambit
Slav — Main line

(black to move)

1. d4 d5
2. c4 c6
3. Nf3 **Nf6**

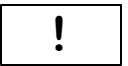
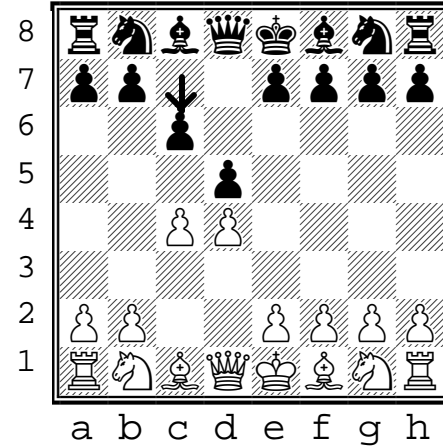


D10 (1)

Queen's Gambit
Slav — Main line

(black to move)

1. d4 d5
2. c4 **c6**



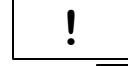
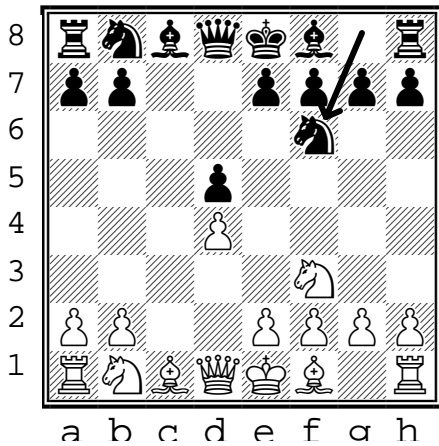
D10 (6)

Queen's Gambit
Slav — Main line

Exchange variation

(black to move)

1. d4 d5
2. c4 c6
3. cxd5 cxd5
4. Nf3 **Nf6**



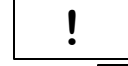
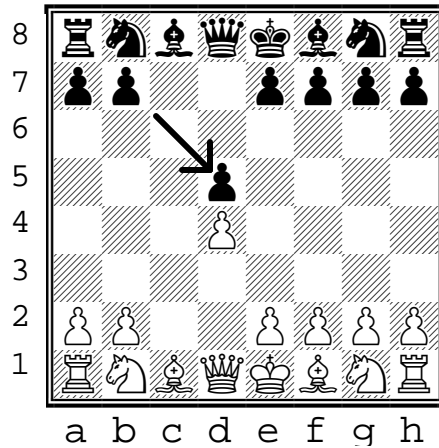
D10 (5)

Queen's Gambit
Slav — Main line

Exchange variation

(black to move)

1. d4 d5
2. c4 c6
3. cxd5 **cxd5**



D17 (4)

Queen's Gambit
Slav — Main line

(black to move)

1. d4 d5
2. c4 c6
3. Nf3 Nf6
4. Nc3 dxc4
5. a4 **Bf5**

