

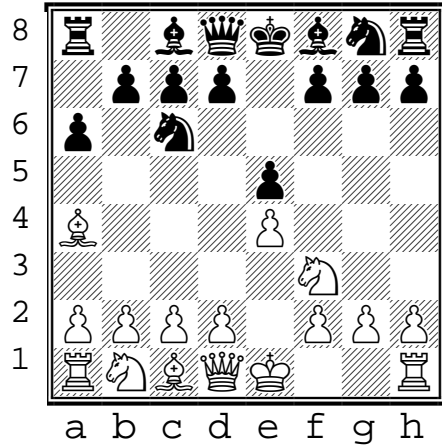
???

(B1)

Spanish Game
Morphy Def - 4. Ba4

(Black to move)

1. e4 e5
2. Nf3 Nc6
3. Bb5 a6
4. Ba4 ???



???

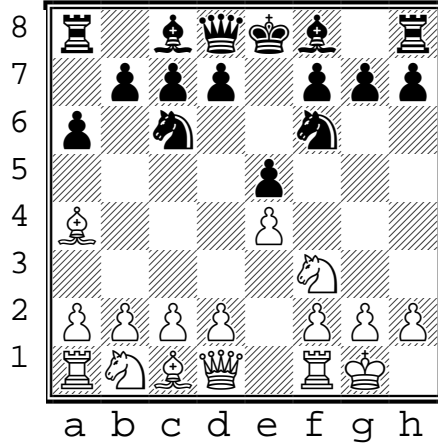
(B2)

Spanish Game
Morphy Def - 4. Ba4

(Black to move)

Top 2 GM moves

1. e4 e5
2. Nf3 Nc6
3. Bb5 a6
4. Ba4 Nf6
5. 0-0 ???



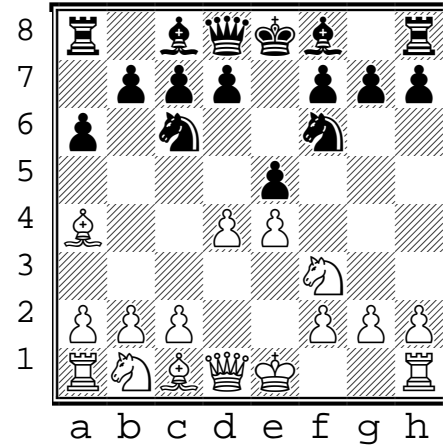
???

(B3)

Spanish Game
Morphy Def - 4. Ba4

(Black to move)

1. e4 e5
2. Nf3 Nc6
3. Bb5 a6
4. Ba4 Nf6
5. d4 ???



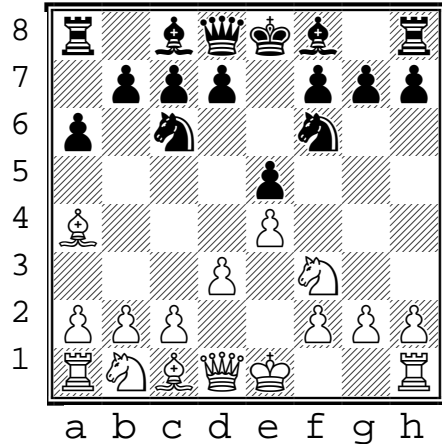
???

(B4)

Spanish Game
Morphy Def - 4. Ba4

(Black to move)

1. e4 e5
2. Nf3 Nc6
3. Bb5 a6
4. Ba4 Nf6
5. d3 ???



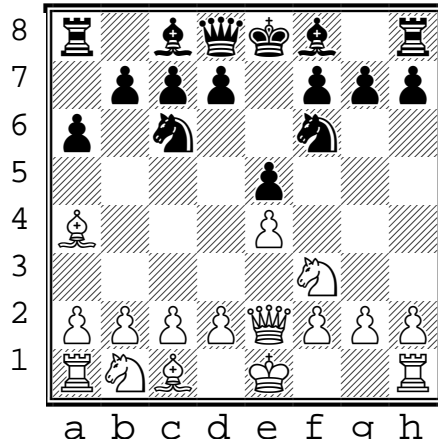
???

(B5)

Spanish Game
Morphy Def - 4. Ba4

(Black to move)

1. e4 e5
2. Nf3 Nc6
3. Bb5 a6
4. Ba4 Nf6
5. Qe2 ???



???

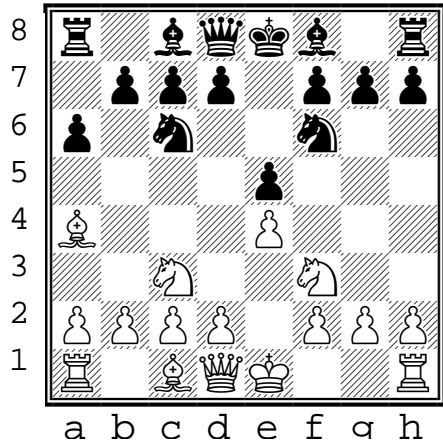
(B6)

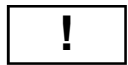
Spanish Game
Morphy Def - 4. Ba4

(Black to move)

Top 2 GM moves

1. e4 e5
2. Nf3 Nc6
3. Bb5 a6
4. Ba4 Nf6
5. Nc3 ???



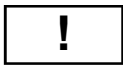
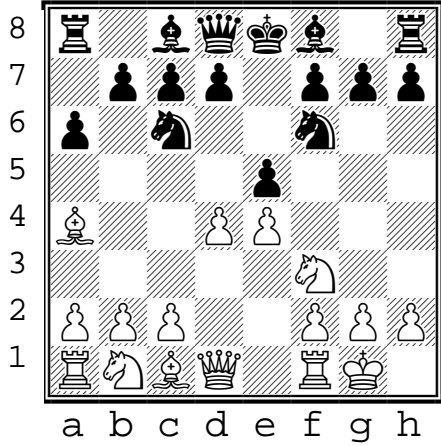


C77 (B3)

Spanish Game
Morphy Def - 4. Ba4

(Black to move)

1. e4 e5
2. Nf3 Nc6
3. Bb5 a6
4. Ba4 Nf6
5. d4 **exd4**
(Center attack)



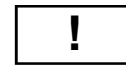
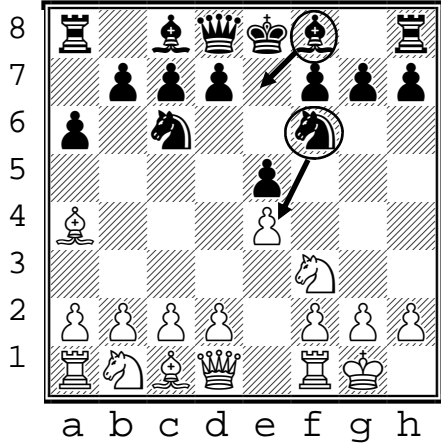
C78 (B2)

Spanish Game
Morphy Def - 4. Ba4

(Black to move)

Top 2 GM moves

1. e4 e5
2. Nf3 Nc6
3. Bb5 a6
4. Ba4 Nf6
5. 0-0 **Be7**
(Closed def.)
or **Nxe4**
(Open Def.)

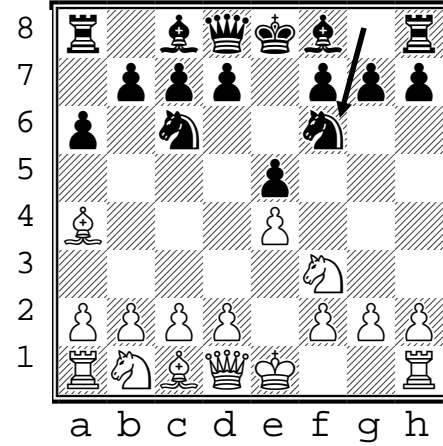


C70 (B1)

Spanish Game
Morphy Def - 4. Ba4

(Black to move)

1. e4 e5
2. Nf3 Nc6
3. Bb5 a6
4. Ba4 **Nf6**



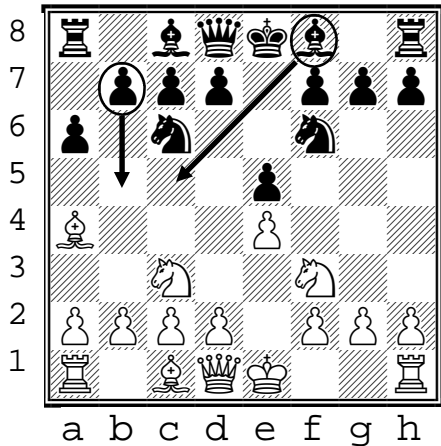
C77 (B6)

Spanish Game
Morphy Def - 4. Ba4

(Black to move)

Top 2 GM moves

1. e4 e5
2. Nf3 Nc6
3. Bb5 a6
4. Ba4 Nf6
5. **Nc3**
(English Attack)
or **b5**
or **Bc5**

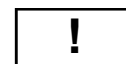
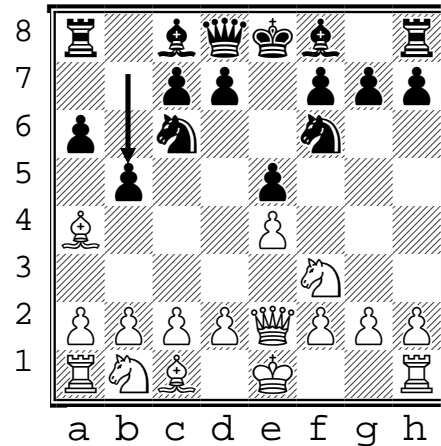


C77 (B5)

Spanish Game
Morphy Def - 4. Ba4

(Black to move)

1. e4 e5
2. Nf3 Nc6
3. Bb5 a6
4. Ba4 Nf6
5. **Qe2**
(Wormaid var.)
b5



C77 (B4)

Spanish Game
Morphy Def - 4. Ba4

(Black to move)

1. e4 e5
2. Nf3 Nc6
3. Bb5 a6
4. Ba4 Nf6
5. **d3**
(Anderssen Attack)
d6

