

Chess Flash Cards! Spanish Game (white)

???

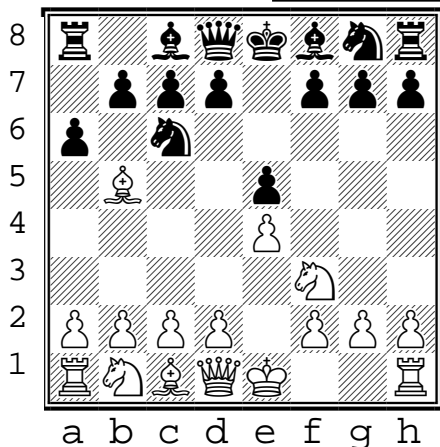
(A1)

Spanish Game

(white to move)

Top GM move

1. e4 e5
2. Nf3 Nc6
3. Bb5 a6
4. ???



???

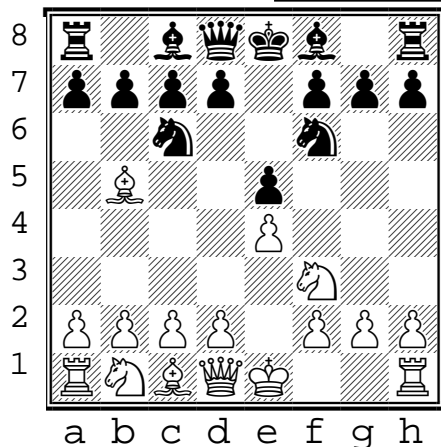
(A2)

Spanish Game

(white to move)

Top 2 GM moves

1. e4 e5
2. Nf3 Nc6
3. Bb5 Nf6
4. ???



???

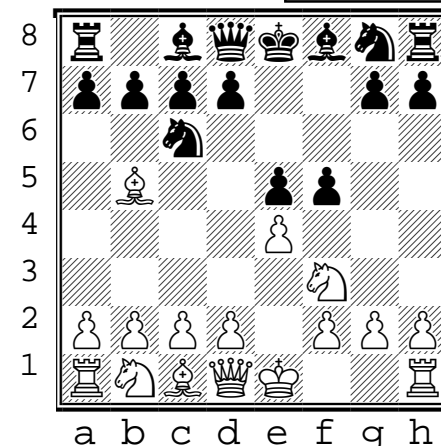
(A3)

Spanish Game

(white to move)

Top 2 GM moves

1. e4 e5
2. Nf3 Nc6
3. Bb5 f5
4. ???



???

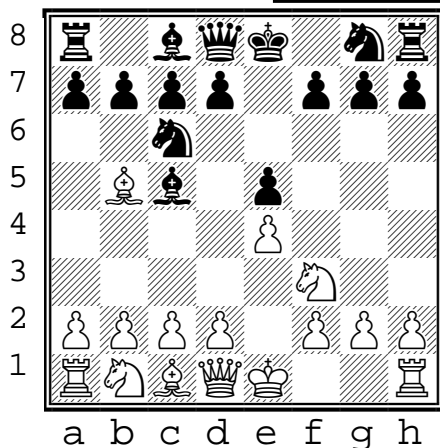
(A4)

Spanish Game

(white to move)

Top 2 GM moves

1. e4 e5
2. Nf3 Nc6
3. Bb5 Bc5
4. ???



???

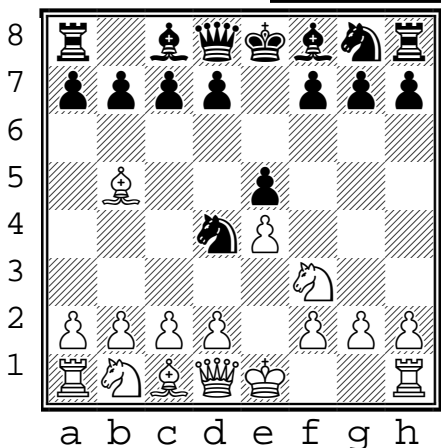
(A5)

Spanish Game

(white to move)

Top GM move

1. e4 e5
2. Nf3 Nc6
3. Bb5 Nd4
4. ???



???

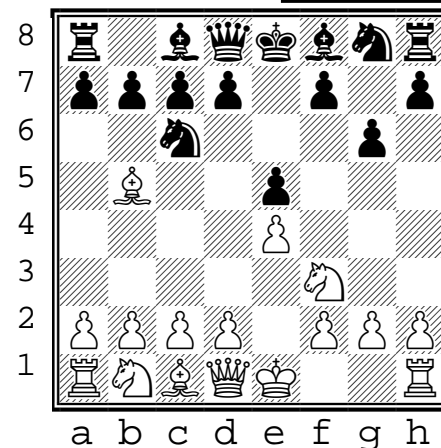
(A6)

Spanish Game

(white to move)

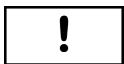
Top 4 GM moves

1. e4 e5
2. Nf3 Nc6
3. Bb5 g6
4. ???



1. Print on front+back of card stock
2. Cut where gray bars overlap.

Chess Flash Cards! Spanish Game (white)



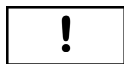
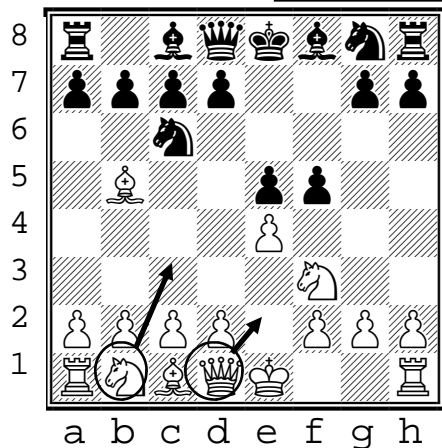
(A3)

Spanish Game

(white to move)

Top 2 GM moves

1. e4 e5
2. Nf3 Nc6
3. Bb5 f5
(Schliemann gambit)
4. **Nc3** or
Qe2



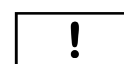
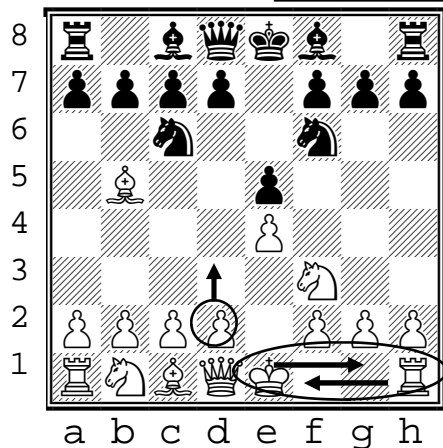
(A2)

Spanish Game

(white to move)

Top 2 GM moves

1. e4 e5
2. Nf3 Nc6
3. Bb5 Nf6
(Berlin defense)
4. **O-O** or
d3



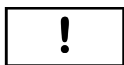
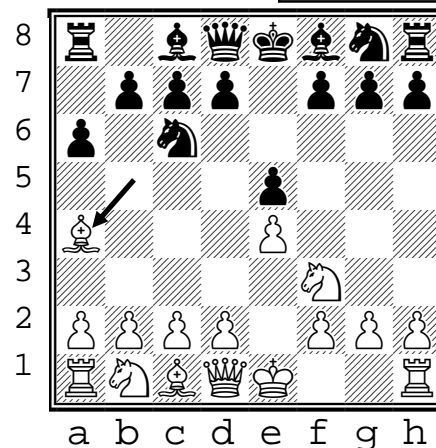
(A1)

Spanish Game

(white to move)

Top GM move

1. e4 e5
2. Nf3 Nc6
3. Bb5 a6
(Morphy defense)
4. **Ba4**



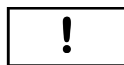
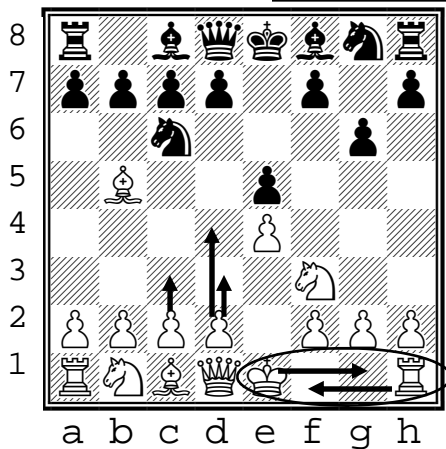
(A6)

Spanish Game

(white to move)

Top 4 GM moves

1. e4 e5
2. Nf3 Nc6
3. Bb5 g6
4. **c3** or
d3 or
d4 or
O-O or



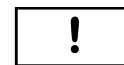
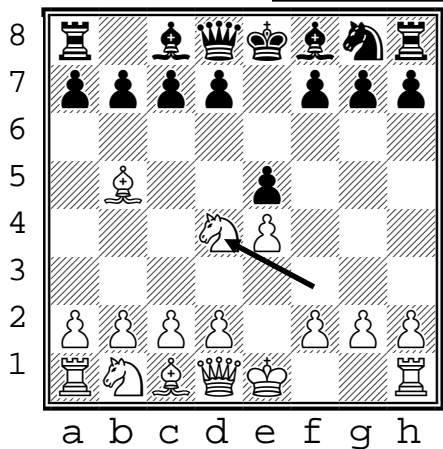
(A5)

Spanish Game

(white to move)

Top GM move

1. e4 e5
2. Nf3 Nc6
3. Bb5 Nd4
(Bird defense)
4. **Nd4**



(A4)

Spanish Game

(white to move)

Top 2 GM moves

1. e4 e5
2. Nf3 Nc6
3. Bb5 Bc5
(Cordel var.)
4. **d3** or
O-O

