

# King Hunt: + pawn vs Queen

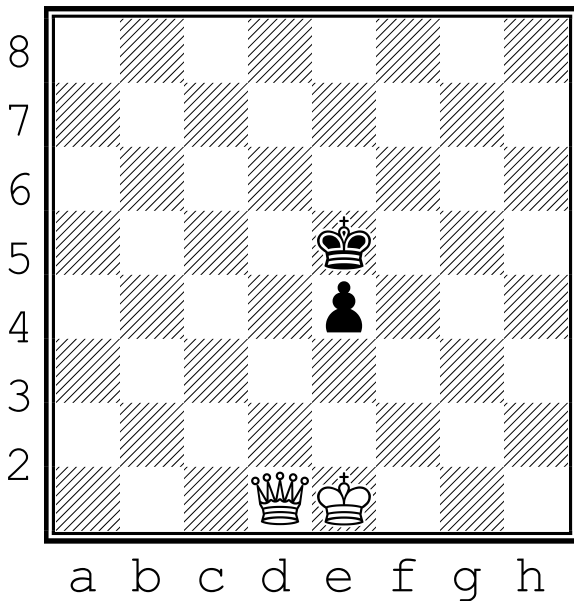


# King Chess Club

A PieceTakers Mini-game: Novice

## Set-up

White to move



## Object

**White:** Checkmate the black king within the designated number of moves for your grade.

**Black:** Avoid checkmate within the designated number of moves for your opponents grade.

Grade	Maximum white moves
K	20
1	18
2	16
3	14
4	12
5	10
Master	9

Strategy for white:

*For an easy mate, double-attack the pawn first to remove it.*

*For fewer moves, ignore pawn and focus on "shrinking the box"*

Strategy for black:

*Use pawn as a shield against attack. Try to stay in center.*

- ♦ *White wins? Try to win in fewer moves next time.*
- ♦ *Win in 10 moves? Try again against the computer!*

## Record your games!

Game	Moves
1	
2	
3	
4	
5	
6	
7	
8	

Name: \_\_\_\_\_ Gr \_\_\_\_\_