

Check, Checkmate, and Stalemate

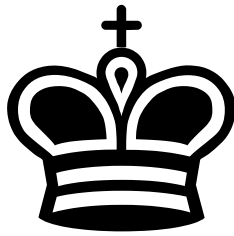
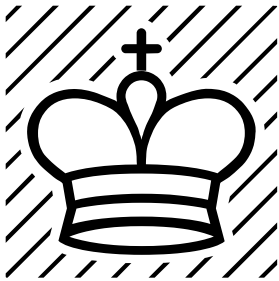


Chess Club

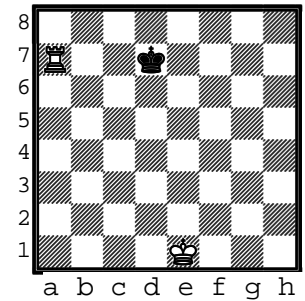
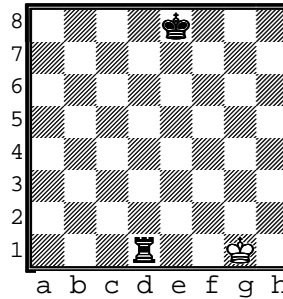
Mini-Lesson

Level: Beginner

The object of a chess game is to win the King.

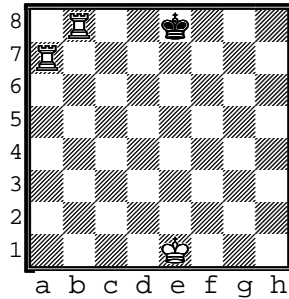
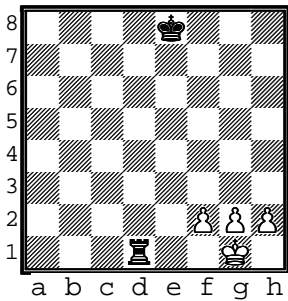


Check: When the King is attacked by another piece, we say it is in "**Check**".



When the King is in check, the rules say it must try to get out of check in the next move

Checkmate: When the King is in "check" and there is no escape, that is called "**Checkmate**" and the game is over.



Stalemate: Sometimes a player is not in check but cannot make a move. This is called "**Stalemate**". The game is over and it is considered a draw (or tie game).

