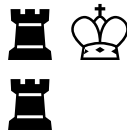


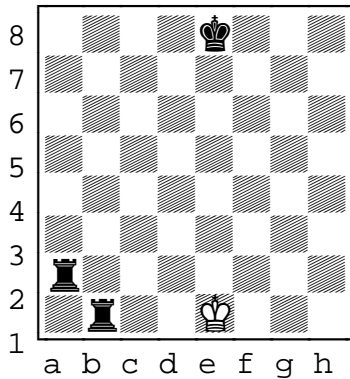
Two Rook Checkmate



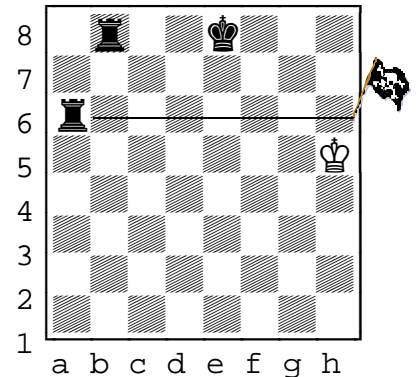
The two rook checkmate is one of the simplest checkmates you can use.

1) This is the basic **end position** of a 2-rook checkmate.

Note how the king is on the edge. One rook has the king in check, the other has cut off any possibility of escape.

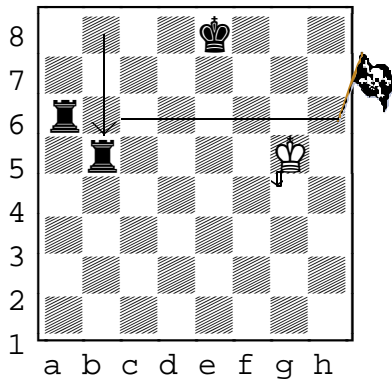


2) The first step in setting up this checkmate is to position one rook so it creates a "line of doom" that the king cannot cross.



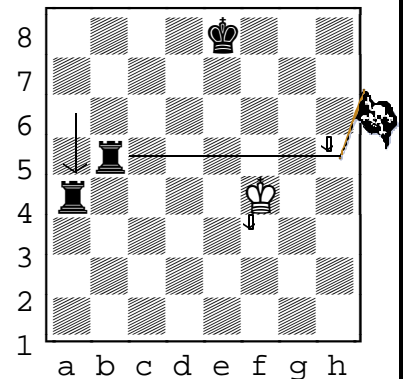
3) Next, bring the second rook down and put the king in check.

The king has only one direction to go and that is toward the rank at the edge of the board.



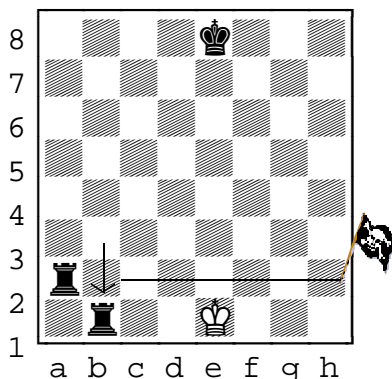
4) Notice the "line of doom" has moved further limiting the king's options.

Now bring the other rook down and place the king in check again. This forces the king ever closer to the edge.

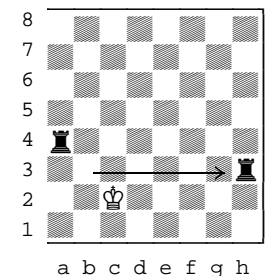
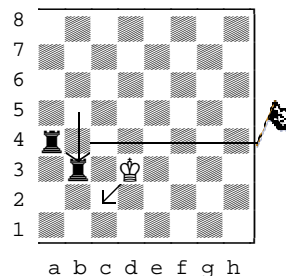


5) Continue to force the king to the edge in this manner until checkmate.

This pattern of moves with the two rooks is sometimes called a "slinky". Can you guess why?



6) The most common defense against the 2-rook checkmate is for the king to attack one of the rooks.



If this occurs, just move the attacked rook to the other side and continue the attack.