

What chess pieces love...



A PieceTakers Mini-lesson Level: Novice

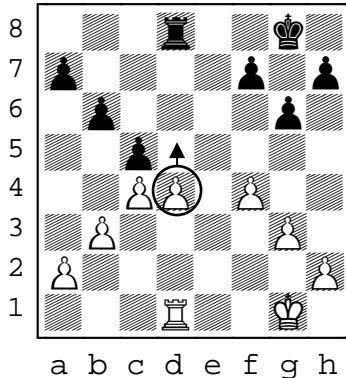
Chess pieces love it when they are deployed into battle exploiting their unique strengths



Pawns love....

connecting with other pawns into chains

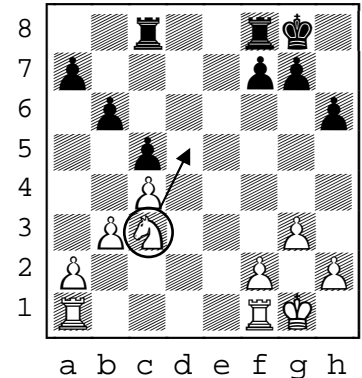
This allow pawns to defend each other freeing major pieces to formulate an attack.



Knights love....

safe outposts on the end of a pawn chain deep in opponents territory

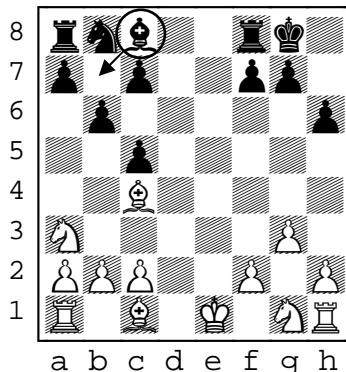
This provides a defended perch for launching attacks and restricts opponents moves



Bishops love....

open diagonals

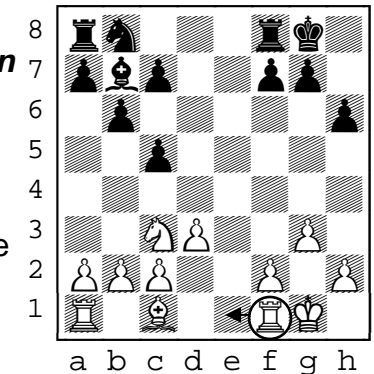
These allow the bishop to sneak through battle lines for stealthy attacks



Rooks love....

open ranks and open files

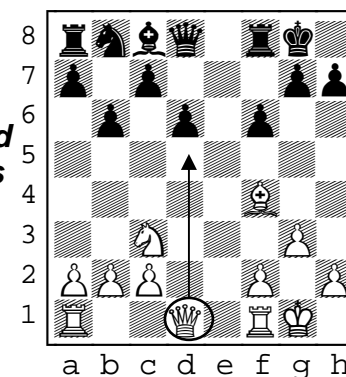
These allow the rook greatest mobility and the opportunity to take command over an entire row.



Queens love....

to stay safe early in the game then pounce on weakened pieces and positions

The queen's speed and maneuverability means it can be deployed quickly when the moment is right.



Kings love....

to come out and join the battle when there are fewer pieces on the board

The king can be an effective fighting piece when there is space to maneuver.

