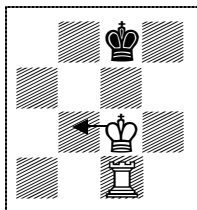


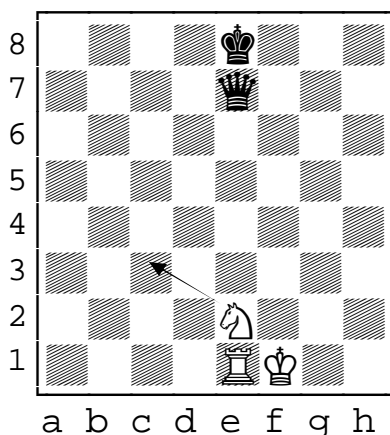
# Discovered Attack



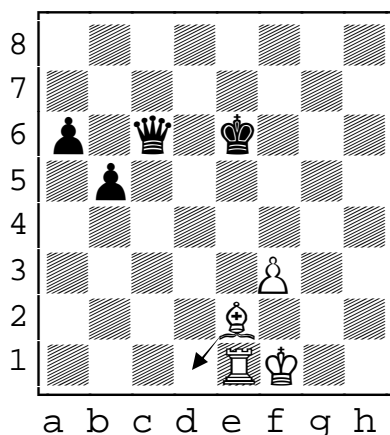
A PieceTakers Mini-lesson Level: Novice

A **discovered attack** occurs when one piece is moved and uncovers an attack upon another piece.

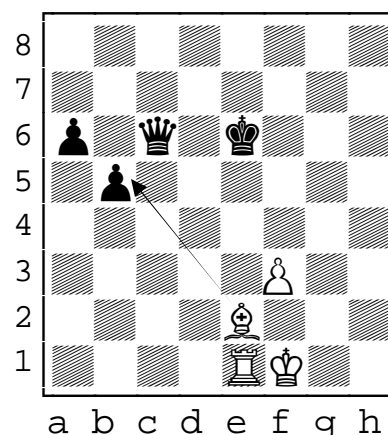
1. Look at the example below. Note how moving the white knight Ne2-c3 creates a **discovered attack** by the rook on the black queen.



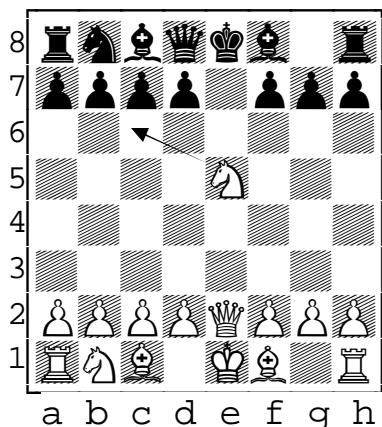
2. Here the discovered attack by Be2-d1 results in a check on the king by the rook. This is called "**Discovered Check**"



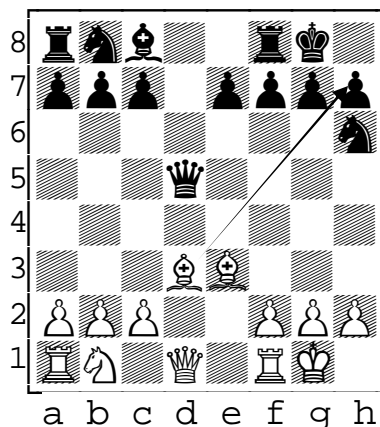
3. *Discovered Check* can be a powerful move because your opponent's only legal move is out of check. This often means the moved piece can make an attack without being taken.



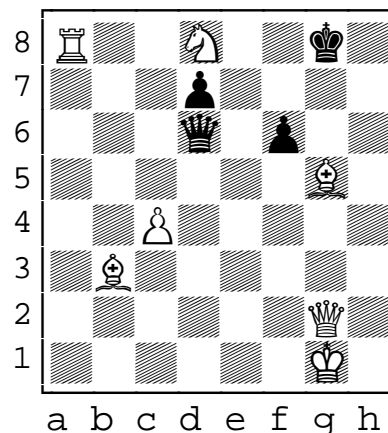
4. Here is a famous example from Petroff's Defense. Moving the white knight creates a discovered check. Moving Ne5-c6 will result in a capture of the black queen.



5. Here the bishop move Bd3-h7 checks the king but will be taken. No problem! The check created an undefendable discovered attack on the black queen.



6. Discovered attack can happen with the rook, queen, or bishop. Find three different discovered checks for white will result in capture the black queen.



Answers for #6: Bg4-f4+, Pc4-c5, Nd8-b7

copyright 2005 c r Beach