

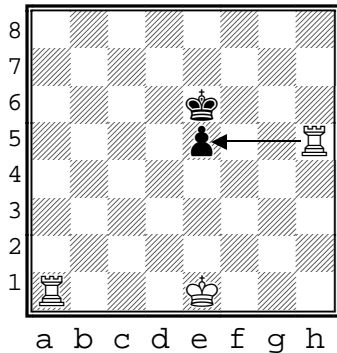
# Double Attack



A PieceTakers Mini-lesson Level: Novice

The Double Attack can be an effective way to capture a piece defended by another piece.

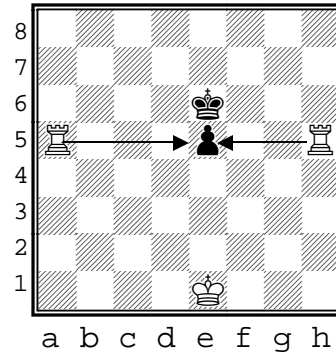
1 Note how the black pawn is under attack by the white rook.



However, the pawn is defended by the black king. So if the Rook takes the pawn, then the King will take the Rook.



2 The solution is to attack with two pieces at the same time

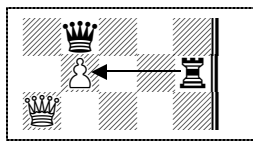


Now the white rook can take the pawn without fear of being captured since it is protected by another piece.

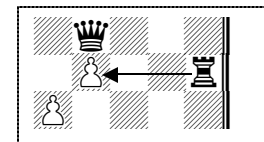


3 When considering a **Double Attack**, always consider the relative value of the pieces involved.

This **Double-Attack** works because white will not sacrifice a queen for the rook



This **Double-Attack** doesn't work because white will gladly sacrifice a pawn to take a rook.



4 Here are some more **Double Attack** examples for black.

Find the double-attack, then decide which piece you take it

