

1. ...

# Openings: The first move



# Chess Club

Mini-Lesson

Level: Novice

With the aid of computers, we can now analyze hundreds of thousands of games played over the centuries. From this analysis, we can see how often the master chess players choose certain openings. Here are the most frequent openings for white in order of popularity.

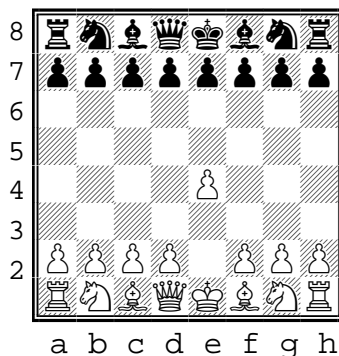
## 1) P-e4

**King's pawn Opening** ★★★

Used: 44%

Attacks center, opens up diagonal for queen and bishop. Frequently followed by:

1. ... **c5** 2. Nf3  
or  
1. ... **e5** 2. Nf3



## 2) P-d4

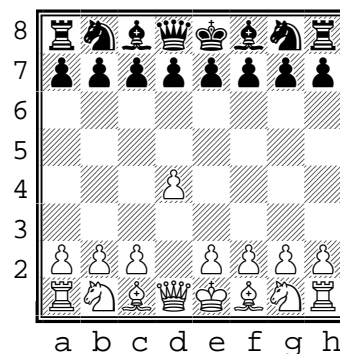
**Queen's pawn Opening** ★★★

Used: 43.5%

Attacks center, opens up diagonal for bishop.

Frequently followed by:

1. ... Nf6 2. c4 ....



## 3) P-c4

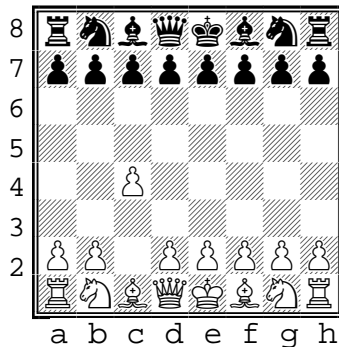
**The English Opening** ★

Used: 7.4%

Also called a 'Sicilian defense' for white.

Frequently followed by:

1. ... **c5**  
or  
1. ... **e5**



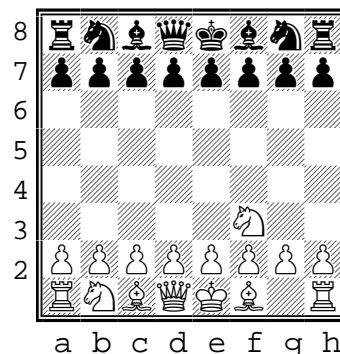
## 4) N-f3

**King's Indian Attack** ★★

Used: 4%

Attacks the center but lets white choose other pawn openings later. Frequently followed by:

1. ... **d5**



5) Other openings are used less than 1%:

Move	Used	Name
<b>P-f4</b>	.3%	Bird System
<b>P-b3</b>	.3%	Nimzowitsch-Larsen Attack
<b>P-g3</b>	.2%	Benko opening

Not surprisingly, the top 4 opening moves also result in the highest percentage of wins for white.

Opening with **P-e4** is, by far, the most popular opening for scholastic players.