

# Openings: Response to 1. e4



# Chess Club

Mini-Lesson

Level: Intermediate

Here are the most frequent moves from black in response to "1. e4." But rather than try to memorize the moves, try to understand the reasons behind the moves.

## Most popular Main Lines

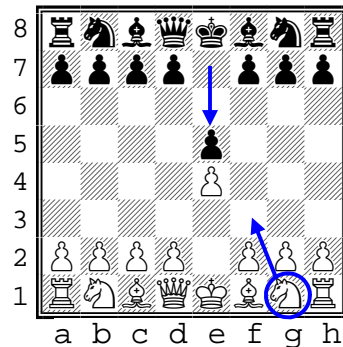
... e5

**King pawn game**

Why?

- develops the knight
- attacks the center
- threatens the undefended black pawn
- Helps prepare for eventual castle

White's best move:  
2. Nf3



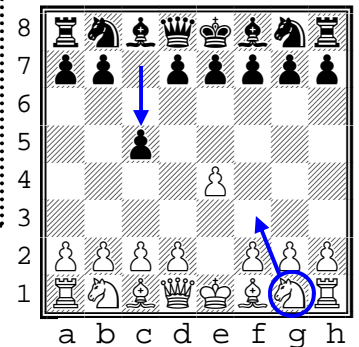
... c5

**Sicilian Defense**

Why?

- develops the knight
- attacks the center
- Helps prepare for eventual castle

White's best move:  
2. Nf3



## Other less popular lines

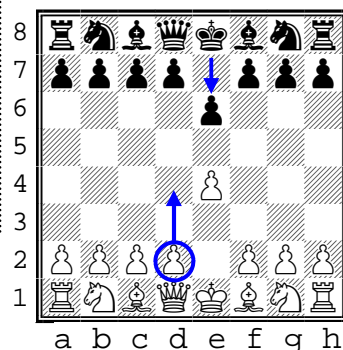
... e6

**French Defense**

Why?

- attacks the center
- advances a pawn
- achieves the powerful d4/e4 pawn pair

White's best move:  
2. d4



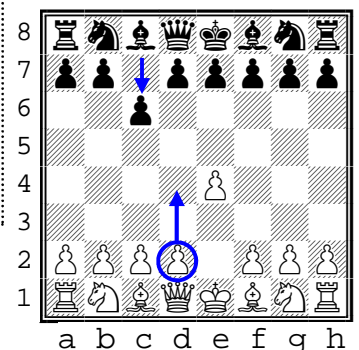
... c6

**Caro Kann**

Why?

- attacks the center
- advances a pawn
- achieves the powerful d4/e4 pawn pair

White's best move:  
2. d4



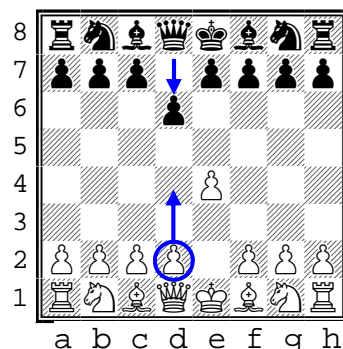
... d6

**Pirc Defense**

Why?

- attacks the center
- advances a pawn
- achieves the powerful d4/e4 pawn pair

White's best move:  
2. d4



**In summary...**

You really only need to consider two different options for your second move here

A) First choice for white is "2. d4" to achieve that powerful d4/e4 pair.

But if that d4 square is under attack...

B) Second choice for white is "2. Nf3" which attacks center