

Openings:

1. e4 e5 2. Nf3 Bc4



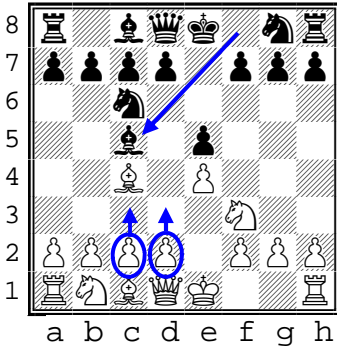
Chess Club

Mini-Lesson

Level: Intermediate

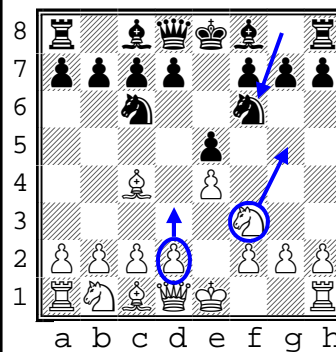
Here are the most preferred opening responses by grandmasters. But don't just try to memorize the moves, try to understand the reasons behind the moves.

...Bc5 Here black continues to maintain match white move-for-move in an effort to maintain equality.
★★★



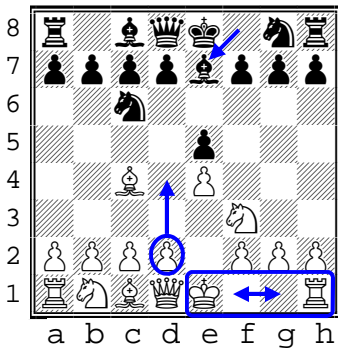
White continues to attack the center with **c3** which is preparation for d4. Or responds with **d3** which opens up the diagonal for the c1 bishop. White can also consider **castling**.

...Nf6 Here black uses the knight to begin an attack on the white pawn at e4.



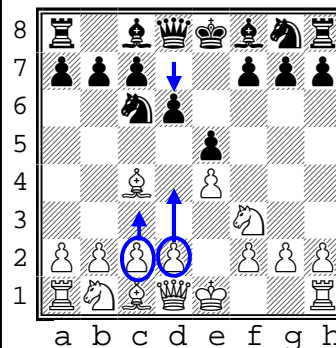
White has the option of **d3** which defends the e4 pawn and opens up the diagonal for the bishop at c1. Or white can make the bold move of **Ng5** which puts a double attack on the weakly defended f7 pawn.

...Be7 Here black is making a rather passive move that allows white to develop however it wishes.
★



White can choose **e4**, an aggressive move that demands a response to take or defend. Or white may choose to just hunker down and **castle**.

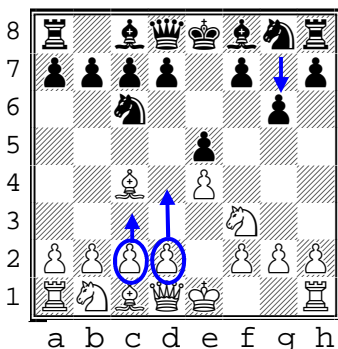
...d6 Here opens up the diagonal for one bishop while blocking the other.



White continues to attack the center with **c3** (preparation for d4). Or white can go with **d3** which opens up the diagonal for the c1 bishop.

Or White can also consider **castling**

...g6 Here black may be thinking about following soon with Bg7. This is an opportunity



for white to continue an attack on the center with **c3** (preparation for d4). Or white can go with **d3** which opens up the diagonal for the c1 bishop.

Or White can also consider **castling**

Reviewing white options

- A) **c3** appears to be a viable choice in all these cases. It is considered preparation for d4.
- B) **d4** is another common choice and demands black to make a take-or- defend decision.
- C) **Castling** is always an option here for when white wishes to be cautious.