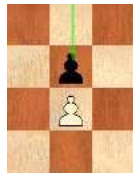


Openings: 1. e4 e5



Chess Club

Mini-Lesson

Level: Intermediate

Here are the most frequent responses by grandmasters for white in response to "1. e4 e5". But don't just try to memorize the moves, try to understand the reasons behind the moves.

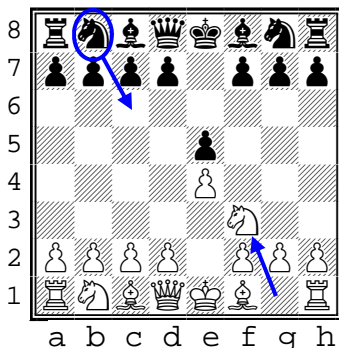
Most popular Main Line

... Nf3

King's Knight Opening

Why?

- defends the pawn at e5
- develops the knight
- attacks the center



Black's best move:
2. Nc6

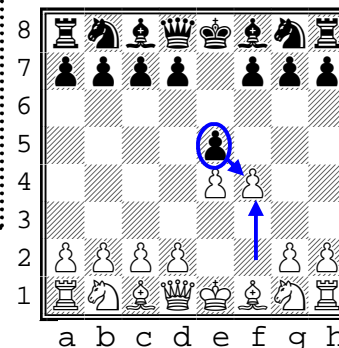
Other less popular lines

... f4

King's Gambit

Why?

- Takes an undefended piece
- Opens up white's king side
- Will later defend with g5



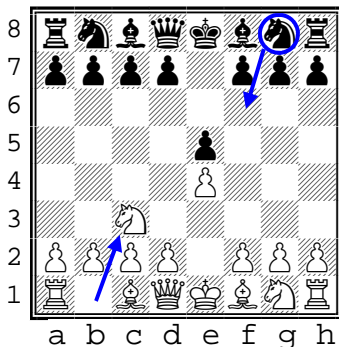
Black's best move:
2. exf4

... Nc3

Vienna Game

Why?

- develops the knight
- attacks the center
- prepares for castle
- restricts options of knight at c3



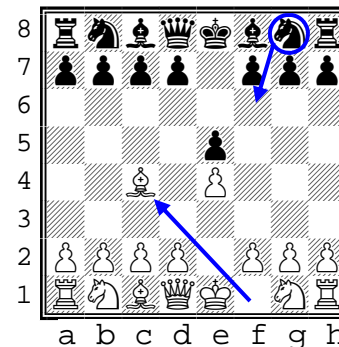
Black's best move:
2. Nf6

... Bc4

Bishop's Opening

Why?

- attacks undefended pawn at e4
- develops knight
- prepares for castle
- attacks the center
- prepares for castle



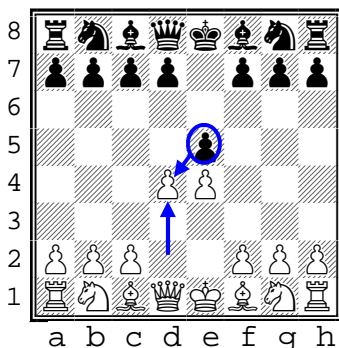
Black's best move:
2. Nf6

... d4

Center Game

Why?

- Releases tension of defending e5
- May lure queen out early



Black's best move:
2. exd4

In summary...

Since white moved first, white has more control.

- If white offers a pawn, black should take it. It reduces one worry, and is a forcing move
- If white attacks the e5 pawn, black should defend it with Nc6.
- Otherwise, the Nf6 tends to be a nice early developmental move for black