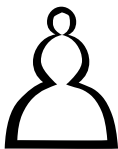


The

Pawn

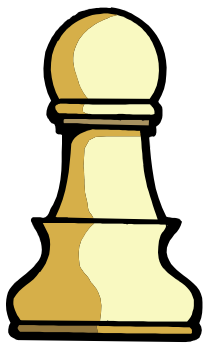


Chess Club

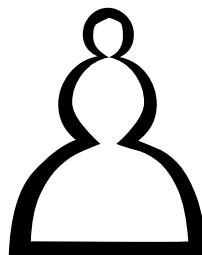
Mini-Lesson

Level: Beginner

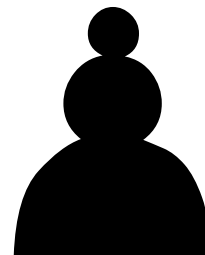
The **pawn** may be the smallest but together they can be a mighty force.



Here is how the **pawn** is represented on board diagrams.

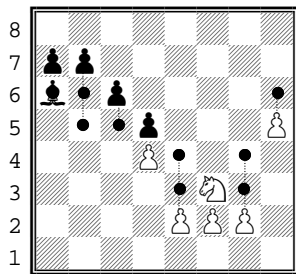
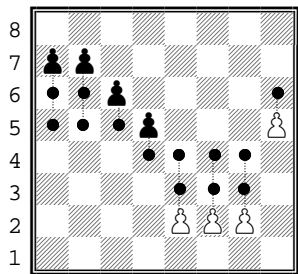


White Pawn

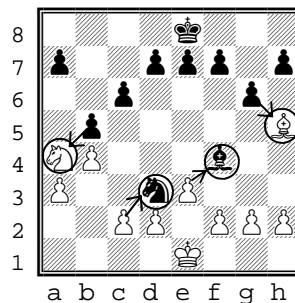


Black Pawn

A **pawn's** first move can be forward one or two squares. After that, it can only move forward one square at a time.



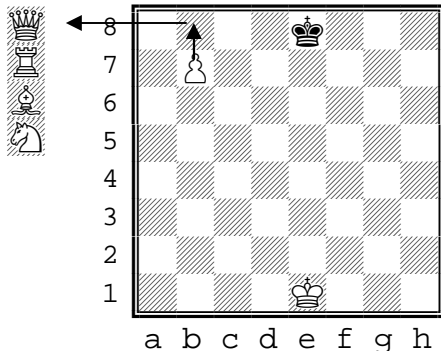
The **pawn** captures diagonally



Here the pawns can capture only the circled pieces.

However the **pawn cannot** jump over any pieces in the way.

When the **pawn** reaches the last row, it is promoted, usually to a queen, but it can be promoted to a rook, bishop, or knight also.



Starting Position: The **pawns** start in a row right in front of their army.

