

Piece Values



To aid in the analysis of chess games, values have been assigned to pieces to indicate their comparative worth. A rule-of-thumb for deciding "who's ahead" is to calculate who has the highest total piece values.

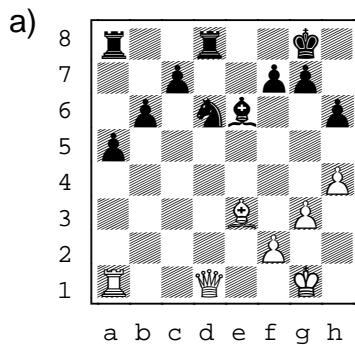
1) Piece Value

	Pawn	1
	Bishop	3
	Knight	3
	Rook	5
	Queen	9
	King	game

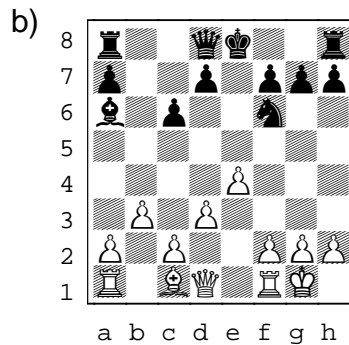
2) Tips:

- When comparing piece values, it's sometimes easier to just cancel out pieces of the same values and add the rest.
- When considering a multiple piece exchange, compare the total value of all pieces to be taken for each side.
- Knights are considered slightly more valuable than bishops at the beginning of the game when there are lots of pieces. Bishops are slightly more valuable than knights as pieces are captured and diagonals open up.

3) Calculate who is ahead in piece values in these games



(Add value of pieces on board)

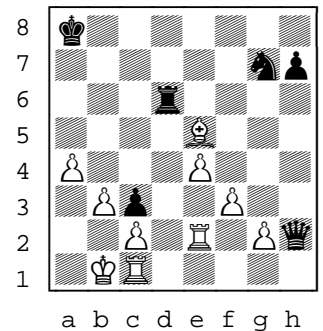


(Add value of pieces taken)

4) Solve the puzzle:

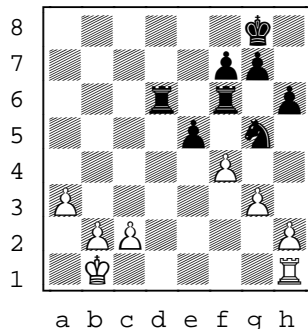
The white bishop has four black pieces under attack.

Based on piece values, what is the best move for white? 2nd best? 3rd and 4th best?



5) Solve the puzzle:

White to move. Find the move that will end up in most *total* piece values taken.

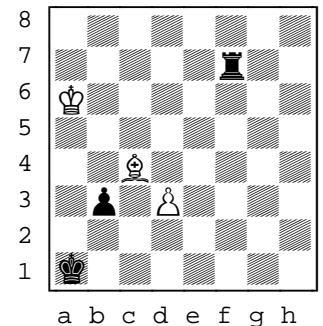


6) More tips:

- Pawns become more valuable as they get closer to promotion.
- Remember you can be ahead on pieces and still lose the game. Pay attention to position!

7) Solve the puzzle:

White to move. Should white take the rook or the pawn with the bishop? Why?



Answers:



3) a. Black (22 pts vs 20) b. Black (9 pts taken vs 8) 4) 1. e5xh2 2. e5xd6 3. e5xg7 4. e5xc3 5) f4xe5 d6-c6 e5xf6 c6xf6 7) White should take the pawn. Otherwise it will become a queen in two moves.