

# Scholar's Mate



# Chess Club

Mini-Lesson

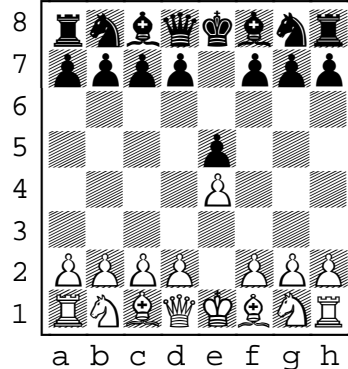
Level: Novice

Scholar's Mate is a fast checkmate often used against beginning players.

1

Scholar's Mate starts off with a typical king pawns opening:

1. Pe2-e4 Pe7-e5

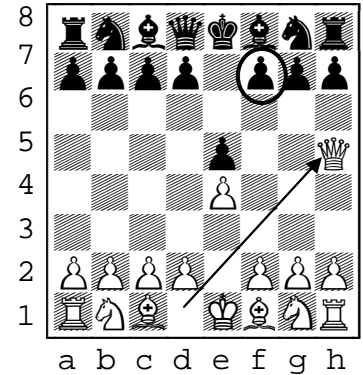


2

White then makes a move that attacks the black pawn at f7:

2. Qd1-h5

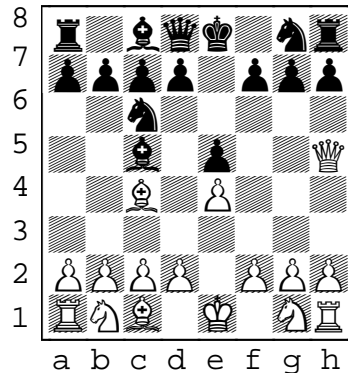
(For this lesson, we'll pretend black does not see Scholar's Mate and fails to properly defend against it.)



3

Now white brings a second attack on the crucial f7 pawn by moving Bf1-c4.

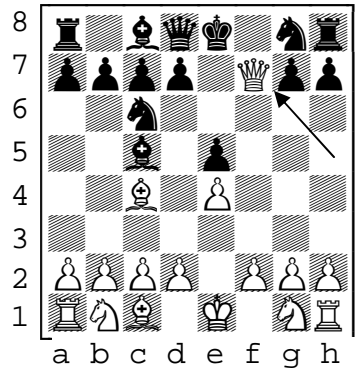
(...still pretending black does not see Scholar's Mate coming and fails to properly defend it.)



4

Time for the checkmate with

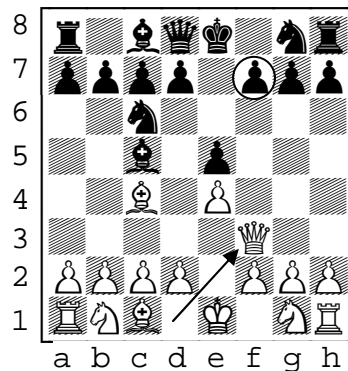
**Qh5xf7++**



5

There are variations including this queen move of Qd1-f3, or moving the bishop first.

The effect is still the same. White can mate with a queen move to f7.



6

**Avoid this common mistake!** Here black responds with Pg7-g6 hoping to chase the queen away.

However the queen then takes the e5 pawn with **Qh5xe5+** check and forks the rook.

