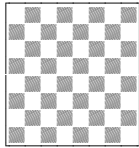


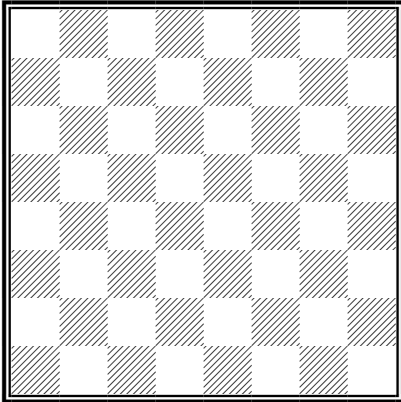
The Board



King Chess Club

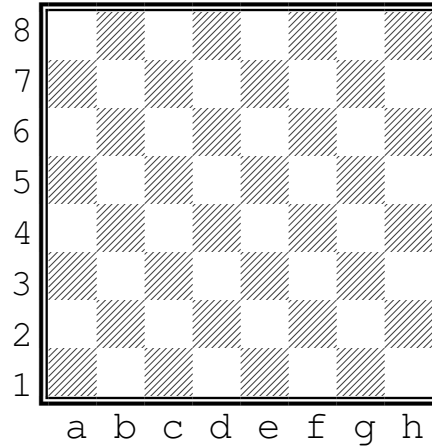
A PieceTakers Mini-lesson Level: Beginner

The chess board is a grid of 8 squares across and 8 squares down



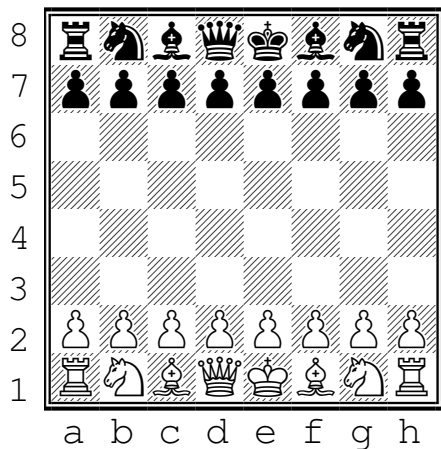
The lower right square is always the light square. Always remember:
"light on the right"

Rows are labeled 1 through 8.
Columns are labeled "a" through "h"



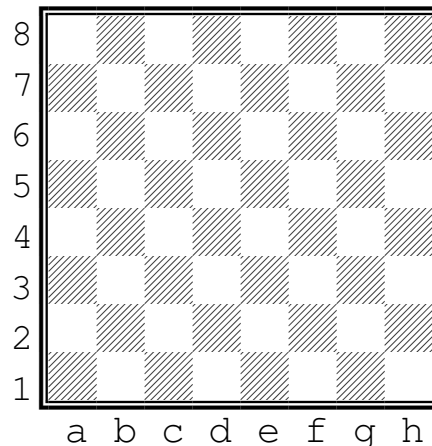
Squares can be identified like the game Battleship. "a1" is the lower left square, "h8" is the upper right square

This is what the board looks like with all the pieces. (You will learn the pieces later)



The White pieces are always set up on rows 1 and 2. Black pieces are always set up on rows 7 and 8.

Quiz time!



- 1) Place a "W" on squares c6 and f6.
- 2) Place an "X" on squares b4 and c3.
- 3) Place an "Y" on squares g4 and f3.
- 4) Place an "Z" on squares d2 and e2.