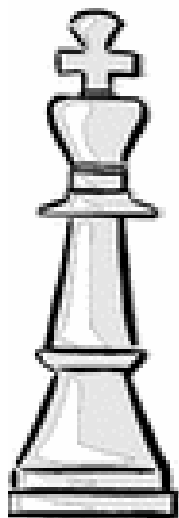


The

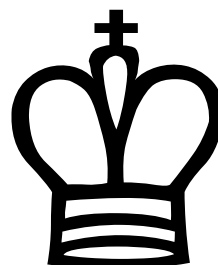
King



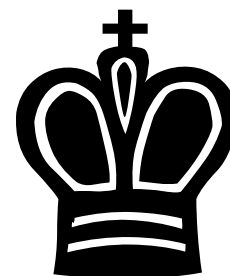
The **King** is the most valuable piece.

In fact, the primary objective of chess is to win your opponents King

Here is how the **King** is represented on board diagrams.

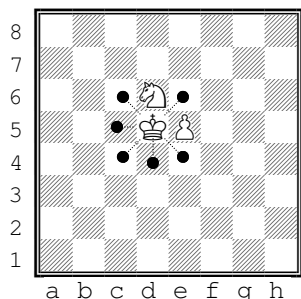
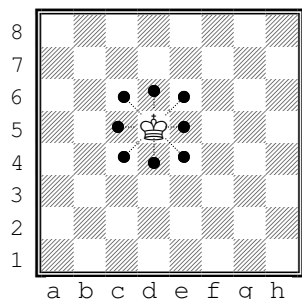


White King

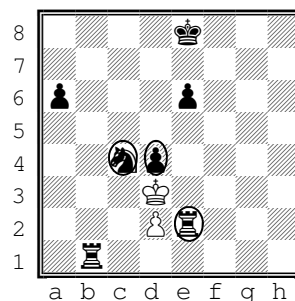


Black King

The **King** can move diagonally, up/down, or right/left just one square a move.

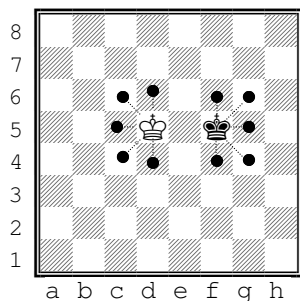


The **King** captures opposing pieces by moving to the space occupied by the piece.



Here the white **King** can capture only the circled pieces.

It is **illegal** to move your **king** where it can be captured.



So in the above example, note how the kings cannot move next to each other.

Starting Position: The **King** starts next to the queen on the color opposite its own.

