

The

Knight



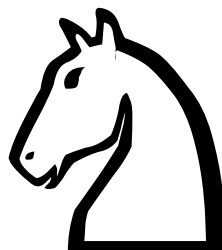
King Chess Club

A PieceTakers Mini-lesson Level: Beginner

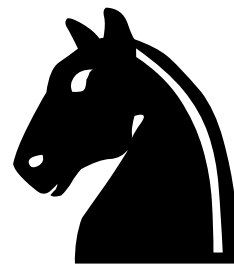
The **knight** is the only piece that does not move in a straight line and can jump over other pieces.



Here is how the **knight** is represented on board diagrams.

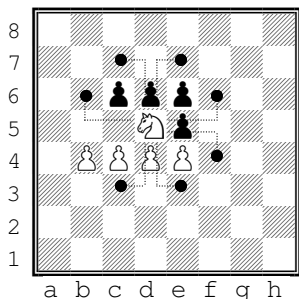
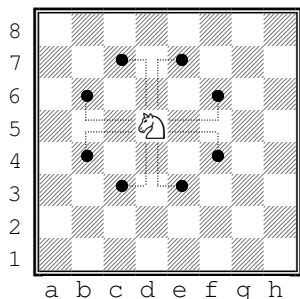


White knight

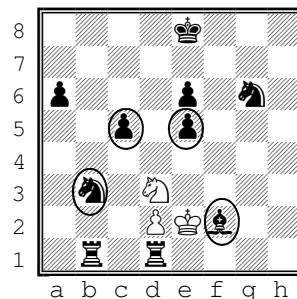


Black knight

The **knight** moves like an “L”: Two squares in one direction, then one square over.



The **Knight** captures opposing pieces by moving to the space occupied by the piece.

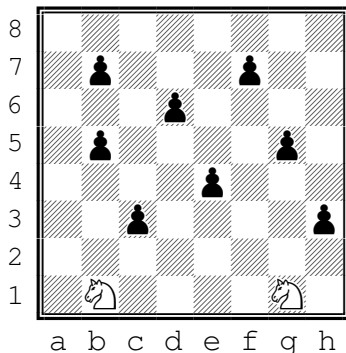


The **Knight** can also jump over other pieces that are in the way.

Here the white **Knight** can capture only the circled pieces.

Knight-Pawn hunt!

Place two **knight** on the board as shown. Then place 8 “sleeping” pawns randomly on the board. Capture all the pawns in as few moves as possible.



Starting Position: The **Knights** starts next to the rooks.

