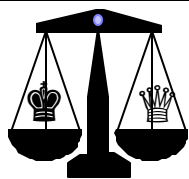


Legall's Mate



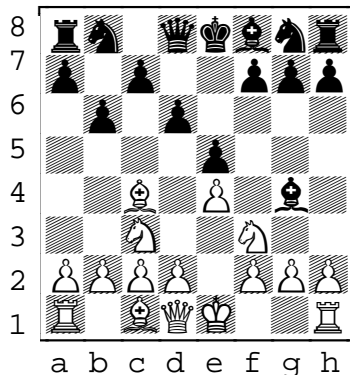
Legall's Mate is a famous example of sacrificing the queen for a greater goal.

1) Legall's Mate starts off with a variation of the king's pawn opening.

White to move.

STOP!

See if you can see the sequence where white sacrifices a queen to get to a mate.

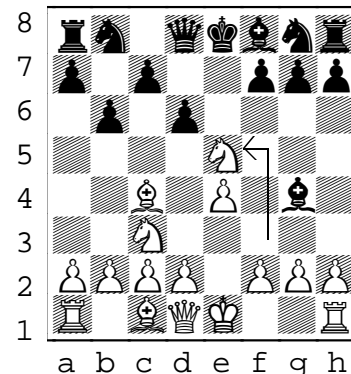


2) White first takes the black pawn

N f3 x e5 !

which exposes the queen.

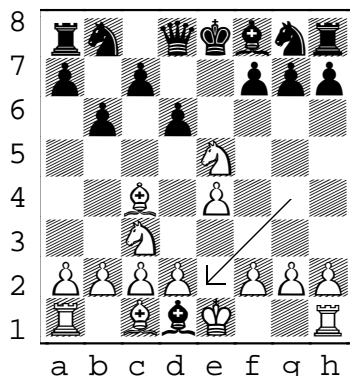
White hopes that black takes the bait.



3) Black can't resist and takes the queen with

B g4 x d1 !

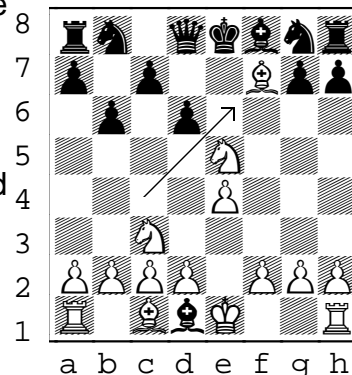
Now white is ready to complete the mate



4) White starts off the impending mate with

B c4 x f7+!

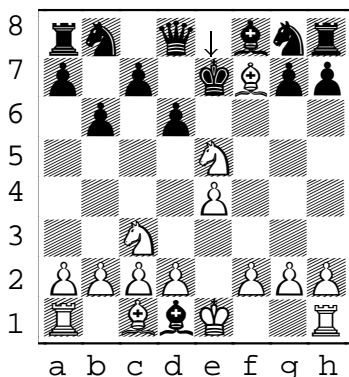
(Note how white did not go for the queen-rook fork at Ne5xf7. A nice fork but not as good as a mate.)



5) Black has no choice but to get out of check with

K e8 - e7

but cannot avoid the inevitable.



6) White finishes off the game with

N c3 - d5 ++

Legall's mate doesn't come up in games very often. But it does serve as a lesson in sacrifices and analyzing all the possibilities of a move.

