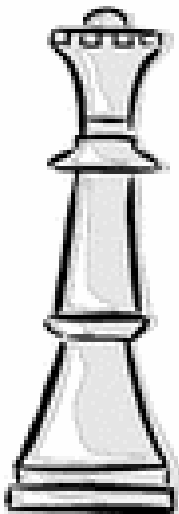


The

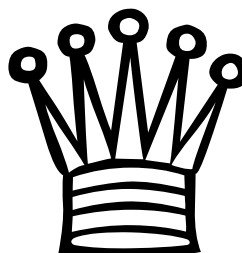
# Queen



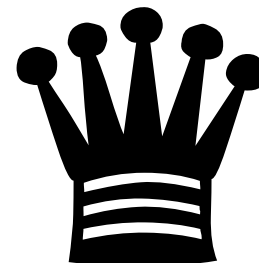
The **queen** is the most powerful piece on the board



Here is how the **queen** is represented on board diagrams.

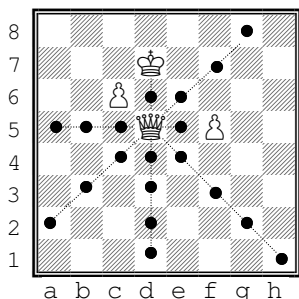
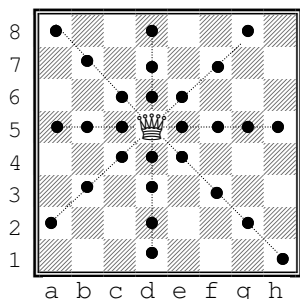


White Queen



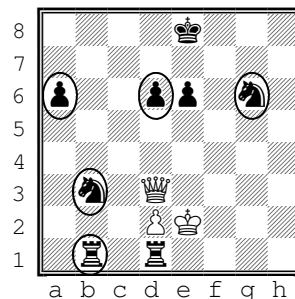
Black Queen

The **queen** can move diagonally, up/down, or right/left for any number of squares in one move.



However the **queen cannot** jump over any pieces in the way.

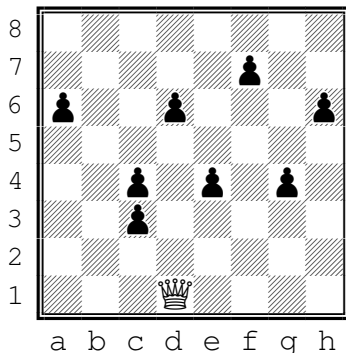
The **Queen** captures opposing pieces by moving to the space occupied by the piece.



Here the white queen can capture only the circled pieces.

### Queen-Pawn hunt!

Place your queen at the starting position. Then place 8 "sleeping" pawns randomly on the board. Capture all the pawns in as few moves as possible.



**Starting Position:** The **Queen** starts next to her king on the square that is the color of her dress.

