

The

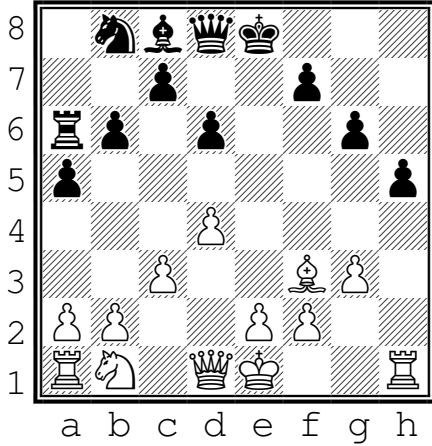
# Bishop



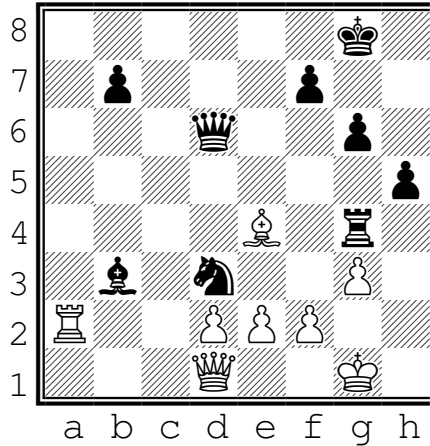
Name: \_\_\_\_\_

## WORKSHEET

What squares can the white Bishop move to?  
\_e4\_, \_\_\_\_\_, \_\_\_\_\_, \_\_\_\_\_, \_\_\_\_\_, \_\_\_\_\_



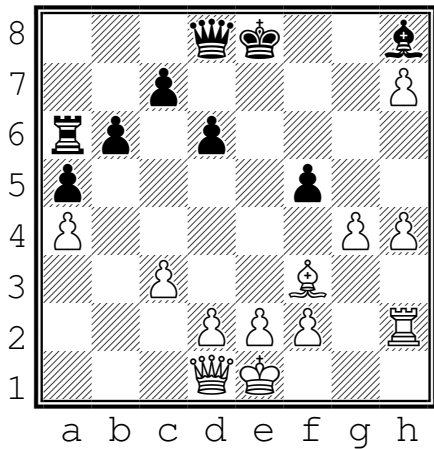
What pieces can the white Bishop take? Indicate the squares: \_d3\_, \_\_\_\_\_, \_\_\_\_\_



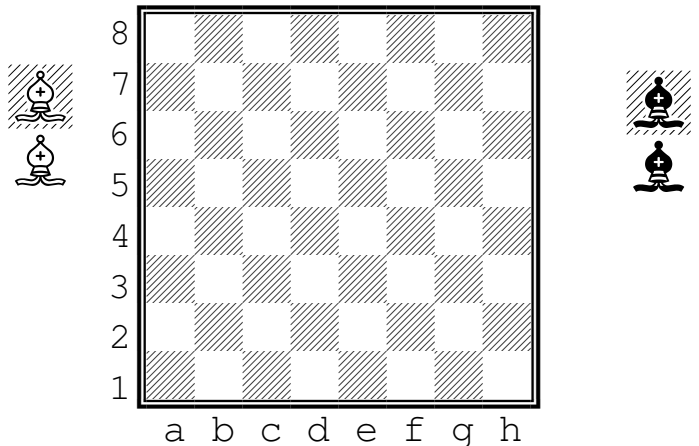
What squares can the black Bishop move to?  
\_\_\_\_\_, \_\_\_\_\_, \_\_\_\_\_, \_\_\_\_\_, \_\_\_\_\_, \_\_\_\_\_

What pieces can the black Bishop take? Indicate the squares: \_\_\_\_\_, \_\_\_\_\_

For the white Bishop to capture the black rook at a6, what squares would it move to? \_\_\_\_\_, \_\_\_\_\_



Indicate the starting position of the white bishops with a "B"



For the black Bishop to capture the white rook at h2, what squares would it move to? \_\_\_\_\_, \_\_\_\_\_

Indicate the starting position of the black bishops with an "X"