

Openings: 1. e4 e5 2. Nf3



Worksheet

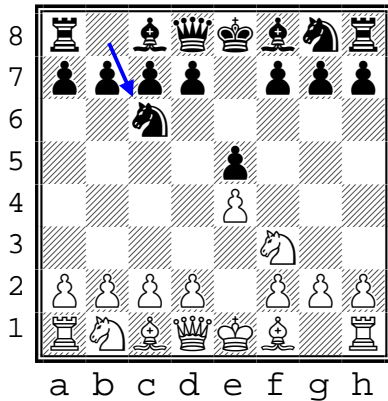
Circle the piece to be moved, then draw an arrow to the target square



Apply opening principles to come up with the move you would use. There is more than one "right" answer here. Later, we'll compare your answers to what the grandmasters use.

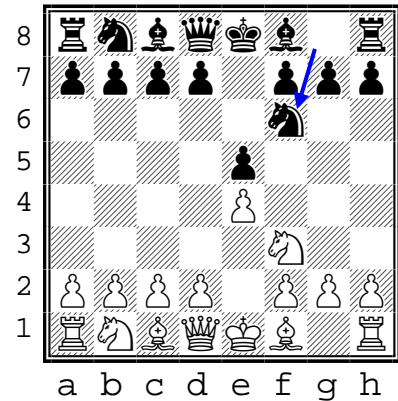
A

1. e4 e5
2. Nf3 Nc6
3. ____



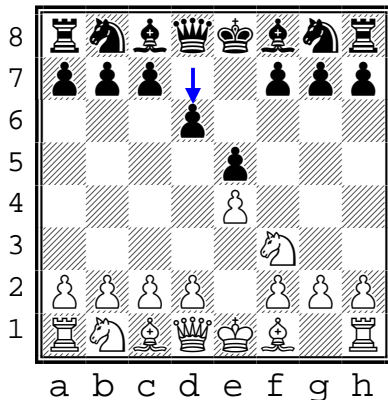
B

1. e4 e5
2. Nf3 Nf6
3. ____



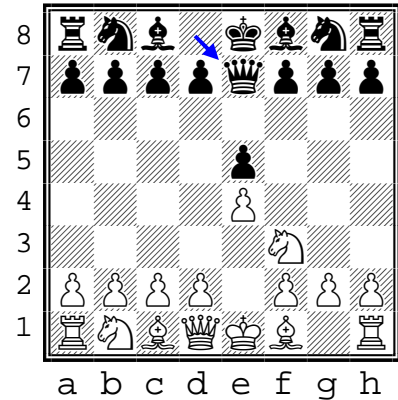
C

1. e4 e5
2. Nf3 d6
3. ____



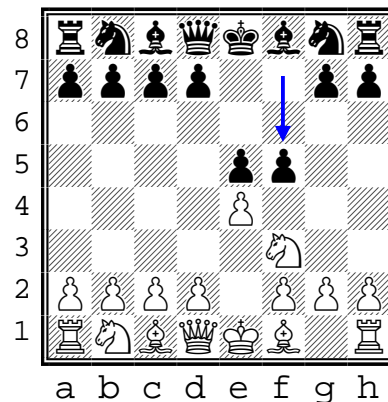
D

1. e4 e5
2. Nf3 Qe7
3. ____



E

1. e4 e5
2. Nf3 f5
3. ____



F

1. e4 e5
2. Nf3 d5
3. ____

