

**Opening trap:
1. e4 e5 2. Qh5
- ANSWERS -**



Worksheet

Circle the piece to be moved, then draw an arrow to the target square

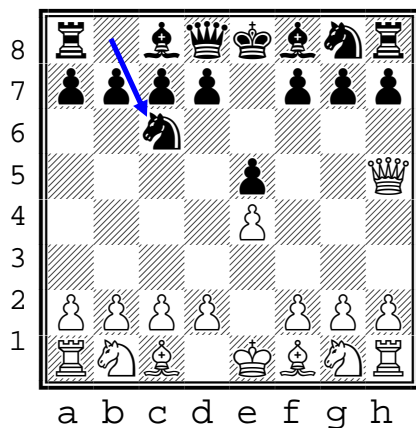


This trap is used frequently against novice players. Know the threats. Show the best defense.

- Black to move -

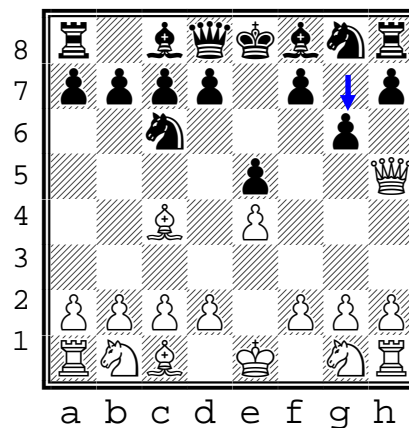
A)

1. e4 e5
2. Qh5 **Nc6**



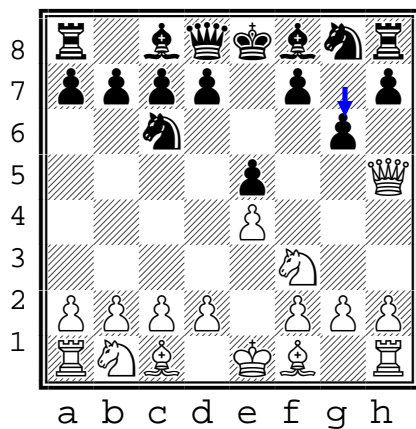
B)

1. e4 e5
2. Qh5 Nc6
3. Bc4 **g6**



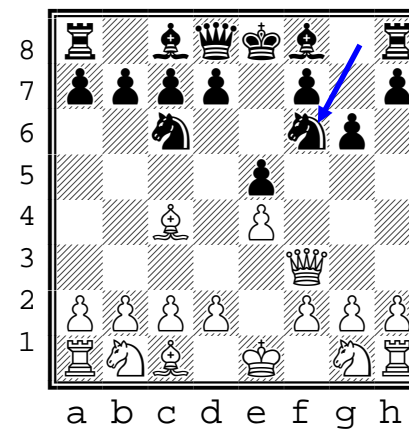
C)

1. e4 e5
2. Qh5 Nc6
3. Nc3 **g6**



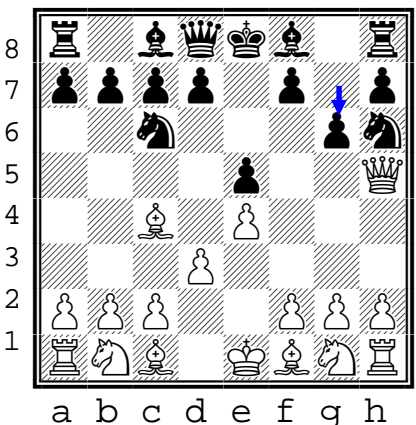
D)

1. e4 e5
2. Qh5 Nc6
3. Bc4 e6
4. Qf3 **Nf6**



E)

1. e4 e5
2. Qh5 Nc6
3. Bc4 Nh6
4. d3 **g6**



F)

1. e4 e5
2. Qf3 _____

Many right answers

2. ... **Nf6**
2. ... **Nh6**
2. ... **Nc6**

