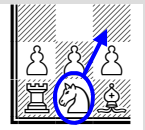


Opening trap: 1. e4 e5 2. Qh5



Worksheet

Circle the piece to be moved, then draw an arrow to the target square

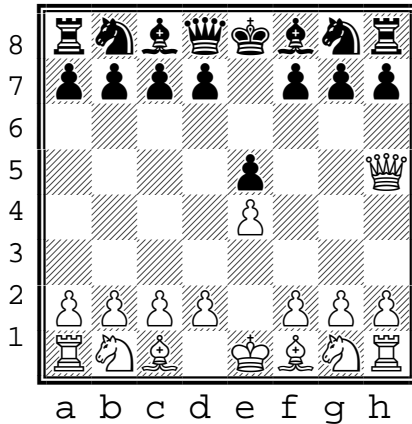


This trap is used frequently against novice players. Know the threats and show how to react.

- Black to move -

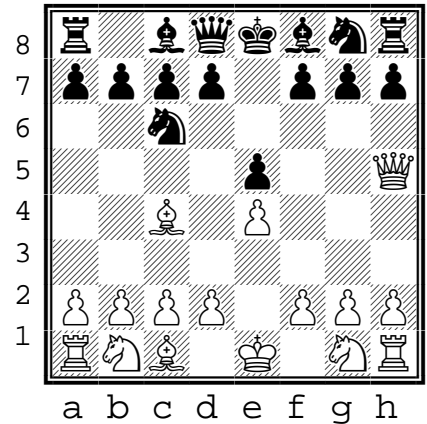
A)

1. e4 e5
2. Qh5 ____



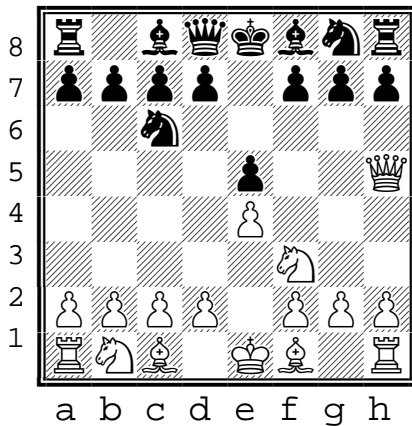
B)

1. e4 e5
2. Qh5 Nc6
3. Bc4 ____



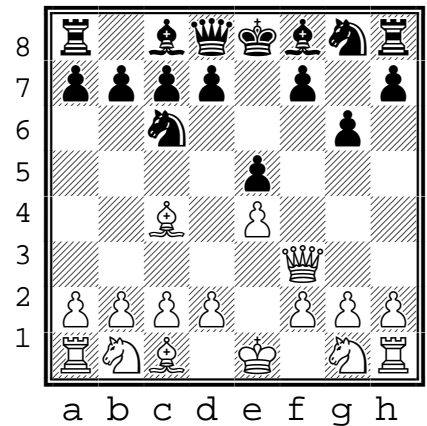
C)

1. e4 e5
2. Qh5 Nc6
3. Nc3 ____



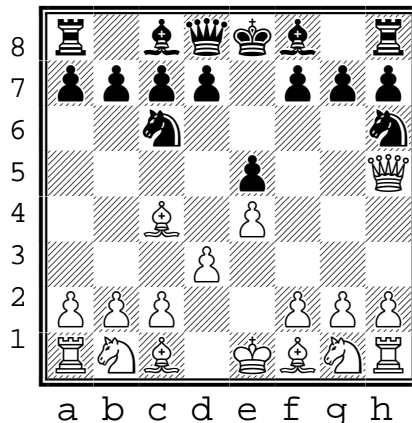
D)

1. e4 e5
2. Qh5 Nc6
3. Bc4 e6
4. Qf3 ____



E)

1. e4 e5
2. Qh5 Nc6
3. Bc4 Nh6
4. d3 ____



F)

1. e4 e5
2. Qf3 ____

