

The

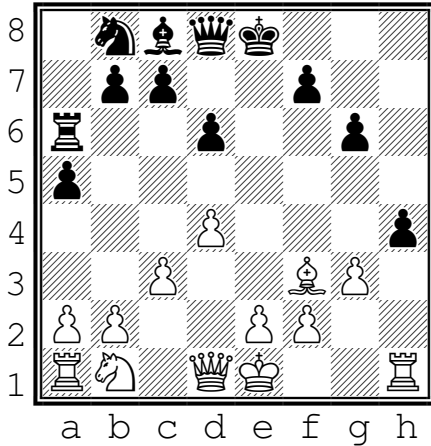
Queen



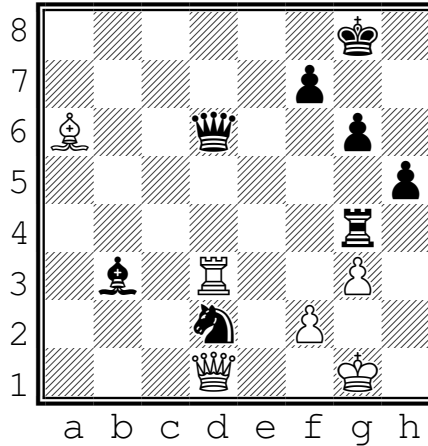
Name: _____

WORKSHEET

What squares can the white Queen move to?
d2, _____, _____, _____, _____



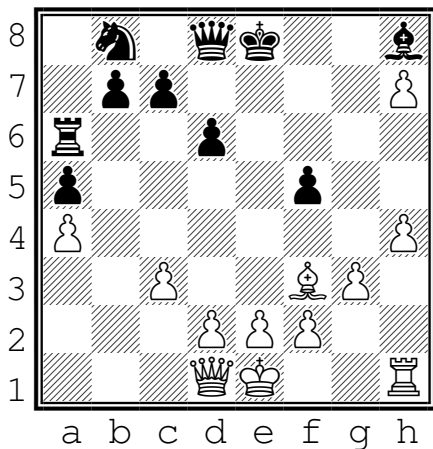
What pieces can the white Queen take? Indicate the squares: _d2_, _____, _____



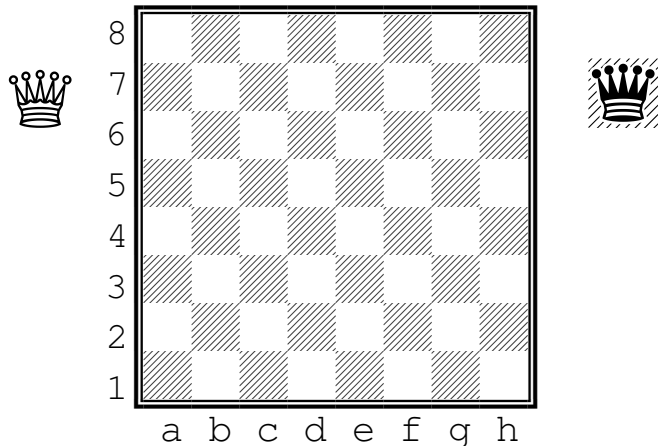
What squares can the black Queen move to?
_____, _____, _____, _____

What pieces can the black Queen take? Indicate the squares: _____, _____, _____

For the white queen to capture the black pawn at f5, what squares would it move to? _____, _____



Indicate the starting position of the white queen with a "Q"



For the black queen to capture the white pawn at h7, what squares would it move to? _____, _____

Indicate the starting position of the black queen with an "X"